

EST.  1977

# OUTDOOR CAP<sup>®</sup>



**PROMOTIONAL**  
HEADWEAR COLLECTION

# NEW STYLES



**GC-100M**

Generic Camo Mesh Back  
PAGE 89



**GC-100**

Generic Camo Snap Back  
PAGE 89



**OC505**

5 Panel Camper  
PAGE 37



**OC510HP**

5 Panel Mesh Back  
PAGE 18



**OC801P**

Printed Distressed Tea-Stained Mesh  
PAGE 24, 51



**OC602**

Modern Solid W/Cord  
PAGE 33



**OC106**

7 Panel Mesh Back  
PAGE 31



**OC200**

Medium Washed Bucket  
PAGE 64



**OC200PF**

Performance Bucket  
PAGE 65



**OC900**

Split Panel Performance Snap Cap  
PAGE 34



**PTM-850**

Performance ProTech Mesh  
PAGE 41, 53



**KNF-PLD**

Plaid Watch Cap With Pom  
PAGE 71



**PDT20M**

Pigment Dyed Twill Mesh Back  
PAGE 25



**FWT-130SB**

Garment Washed Snap Back  
PAGE 22



**OC604M**

All Mesh Cap  
PAGE 19



**OCFOAM**

Foam Mesh Back  
PAGE 20



**PNV-100**

Ultimate Lightweight  
Performance Visor  
PAGE 69



**BWV-100**

Tall Panel Visor  
PAGE 69



**WRA-200**

**Wrangler®** Unstructured Duk Canvas  
PAGE 76



**WRA-202**

**Wrangler®** Weathered Cotton Cap  
PAGE 76



**WRA-201M**

**Wrangler®** Canvas Trucker  
PAGE 76



**HPC-615M**

Premium Rugged Camo Trucker  
PAGE 78, 90



**CARG100**

Cargo Canvas Pocket Cap  
PAGE 77



**DUK-111SB**

Unstructured Duk Canvas  
PAGE 37, 80

# BEST SELLERS



**OC771**

*Premium Modern Trucker*  
PAGE 13, 54



**OC770**

*Premium Low Pro Trucker*  
PAGE 16



**OC871**

*Premium Modern Solid Back*  
PAGE 32



**OC771PF**

*Premium Performance Trucker*  
PAGE 14



**RGR-360M**

*ProFlex® Adjustable Mesh Back*  
PAGE 19, 46



**PN-100**

*Ultimate Lightweight Performance Cap*  
PAGE 35



**BCT-600**

*Structured Brushed Twill Solid Back*  
PAGE 38



**BCT-662**

*Unstructured Brushed Twill Solid Back*  
PAGE 45



**FWT-130**

*Garment Washed Hook Loop*  
PAGE 23, 54



**OC771CAMO**

Camo Premium Modern  
Trucker  
PAGE 14, 83



**OC871CAMO**

Camo Premium Modern  
Solid Back  
PAGE 84, 97



**HPD-615M**

Premium Rugged Trucker  
PAGE 27, 78



**OC503M**

Striped 5 Panel Trucker Cap  
PAGE 29



**PWT-200M**

Tea-Stained Mesh Back  
PAGE 26



**OC571**

Premium 5 Panel Trucker  
PAGE 17



**GWT-111**

Garment Washed Dad Cap  
PAGE 42



**PNY-100M**

Ladies Fit W/Ponytail  
Mesh Back  
PAGE 52



**OC902**

Heavy Washed Patch Cap  
PAGE 50

# EMB: \$12.60

ASK ABOUT  
LEATHER PATCHES



## OC771

Premium Modern Trucker

<b>PROFILE</b>	Pro Round Crown
<b>SIZE</b>	One Size Fits Most, Youth and XL
<b>SHAPE</b>	Structured
<b>FABRIC</b>	Cotton Twill
<b>VISOR</b>	Slight Pre-Curved
<b>SWEATBAND</b>	Cotton Twill
<b>ADD'L DETAILS</b>	Comfort Cotton Sweatband, Contrast Construction Stitch, Fiber Content Varies by Color, See Website for Details

Embroidered Patch



### OSFM



### YOUTH



### XL



MESH BACK

**EMB: \$15.00**

ASK ABOUT LEATHER PATCHES

**OC771CAMO**

*Camo Premium Modern Trucker*



3D Embroidery

**BEST SELLER**

**NEW COLORS**

- PROFILE Pro Round Crown
- SIZE One Size Fits Most and XL
- SHAPE Structured
- FABRIC Canvas Camo
- VISOR Slight Pre-Curved
- SWEATBAND Cotton Twill
- ADD'L DETAILS Comfort Cotton Sweatband, Contrast Construction Stitch on Crown and Visor

OSFM



XL



**EMB: \$14.10**

ASK ABOUT LEATHER PATCHES

**OC771PF**

*Premium Performance Trucker*



Sublimated Patch

**BEST SELLER**

- PROFILE Pro Round Crown
- SIZE One Size Fits Most
- SHAPE Structured
- FABRIC Moisture Wicking Polyester
- VISOR Slight Pre-Curved
- SWEATBAND Moisture Wicking Polyester

OSFM



MESH BACK

**EMB: \$12.80**  
 ASK ABOUT  
 LEATHER PATCHES

**OC771V**

*Premium Hook/Loop Trucker*

- PROFILE Pro Round Crown
- SIZE One Size Fits Most
- SHAPE Structured
- FABRIC Cotton Twill
- VISOR Slight Pre-Curved
- SWEATBAND Cotton Twill
- ADD'L DETAILS Comfort Cotton Sweatband, Contrast Construction Stitch, Fiber Content Varies by Color, See Website for Details



Genuine Leather Patch

OSFM



**EMB: \$15.40**  
 ASK ABOUT  
 LEATHER PATCHES

**OC771P**

*Premium Modern Trucker*

- PROFILE Pro Round Crown
- SIZE One Size Fits Most
- SHAPE Structured
- FABRIC Cotton Twill
- VISOR Slight Pre-Curved
- SWEATBAND Cotton Twill
- ADD'L DETAILS Comfort Cotton Sweatband, Contrast Construction Stitch, Fiber Content Varies by Color, See Website for Details



Custom Shaped Faux Leather Patch

OSFM





**EMB: \$16.60**  
ASK ABOUT  
LEATHER PATCHES

**OC771PM**

Premium Modern Trucker

<b>PROFILE</b>	Pro Round Crown
<b>SIZE</b>	One Size Fits Most
<b>SHAPE</b>	Structured
<b>FABRIC</b>	Cotton Twill
<b>VISOR</b>	Slight Pre-Curved
<b>SWEATBAND</b>	Cotton Twill
<b>DECORATION</b>	Sublimated Mesh Back Panels
<b>ADD'L DETAILS</b>	Comfort Cotton Sweatband, Contrast Construction Stitch, Fiber Content Varies by Color, See Website for Details

OSFM



BLACK/BLACK USA



BLACK/MEXICAN FLAG



LN HEATHERED GREY/TX



LN HEATHERED GREY/USA



3D and Flat Embroidery

**EMB: \$12.60**  
ASK ABOUT  
LEATHER PATCHES

**OC770**

Premium Low Pro Trucker

<b>PROFILE</b>	Pro Round Crown
<b>SIZE</b>	One Size Fits Most
<b>SHAPE</b>	Structured
<b>FABRIC</b>	Cotton Twill
<b>VISOR</b>	Slight Pre-Curved
<b>SWEATBAND</b>	Cotton Twill
<b>ADD'L DETAILS</b>	Fiber Content Varies by Color, See Website for Details

OSFM



BLACK/BLACK



BLACK/GREY



BLACK/NEON BLUE



BLACK/WHITE



BROWN/KHAKI



CHARCOAL/NEON GREEN



CHARCOAL/NEON ORANGE



CHARCOAL/NEON YELLOW



CHARCOAL/WHITE



CORAL/WHITE



DARK GREEN/WHITE



LIGHT SLATE/GREY



LN HEATHERED CHARCOAL/BLACK



LN HEATHERED CHARCOAL/GREY



LN HEATHERED GREY/BLACK



LN HEATHERED GREY/WHITE



LN HEATHERED NAVY/KHAKI



LN KHAKI/WHITE



LN OCEAN BLUE/WHITE



LODEN/KHAKI



NAVY/WHITE



PURPLE/GREY



RED/WHITE



ROYAL/WHITE



BLACK/WHITE/CHARCOAL



CHARCOAL/WHITE/NAVY



CRIMSON/KHAKI



LN HEATHERED LIGHT SLATE/CHARCOAL/BLACK



LN HEATHERED CHARCOAL/WHITE



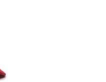
LN HEATHERED NAVY/KHAKI



LN HEATHERED BROWN



PINK/WHITE/LN HEATHERED GREY



WHITE/GREY/RED



Sublimated Patch

**BEST  
SELLER**

MESH BACK

**EMB: \$12.60**  
 ASK ABOUT  
 LEATHER PATCHES



**OC770L**

Low Pro Ladies Trucker

<b>PROFILE</b>	Pro Round Crown
<b>SIZE</b>	Ladies Fit
<b>SHAPE</b>	Structured
<b>FABRIC</b>	Heathered Polyester
<b>VISOR</b>	Slight Pre-Curved
<b>SWEATBAND</b>	Cotton Twill

OSFM



Faux Leather Patch



**EMB: \$12.60**  
 ASK ABOUT  
 LEATHER PATCHES



**OC571**

Premium 5 Panel Trucker

<b>PROFILE</b>	Pro Round Crown
<b>SIZE</b>	One Size Fits Most
<b>SHAPE</b>	Structured
<b>FABRIC</b>	Cotton Twill
<b>VISOR</b>	Slight Pre-Curved
<b>SWEATBAND</b>	Cotton Twill
<b>ADD'L DETAILS</b>	Contrast Construction Stitch, Fiber Content Varies by Color, See Website for Details

OSFM



Custom Shaped Faux Leather Patch



MESH BACK

**EMB: \$12.60**  
 ASK ABOUT  
 LEATHER PATCHES

**OC510HP**

Five Panel Mesh Back

**PROFILE** High Crown  
**SIZE** One Size Fits Most  
**SHAPE** Structured  
**FABRIC** Cotton Twill  
**VISOR** Flat  
**SWEATBAND** Cotton Sheeting

OSFM



Genuine Leather Patch

**NEW**



MESH BACK

**EMB: \$18.40**

ASK ABOUT  
LEATHER PATCHES

**RGR-360M**

*ProFlex® Adjustable Mesh Back*

<b>PROFILE</b>	Pro Round Crown
<b>SIZE</b>	ProFlex® Adjustable
<b>SHAPE</b>	Structured
<b>FABRIC</b>	Cotton Twill
<b>VISOR</b>	Slight Pre-Curved
<b>SWEATBAND</b>	Flexible Sweatband
<b>ADD'L DETAILS</b>	ProFlex® Adjustable Sweatband



Sublimated Patch



OSFM



**EMB: \$11.50**

ASK ABOUT  
LEATHER PATCHES

**OC604M**

*All Mesh Cap*

<b>PROFILE</b>	High Crown
<b>SIZE</b>	One Size Fits Most
<b>SHAPE</b>	Unstructured
<b>FABRIC</b>	Polyester Mesh
<b>VISOR</b>	Flat
<b>SWEATBAND</b>	Cotton Twill
<b>ADD'L DETAILS</b>	Full Mesh Crown



Sublimated Patch



OSFM



MESH BACK

**EMB: \$14.00**  
 ASK ABOUT  
 LEATHER PATCHES

**OCFOAM**

*Foam Mesh Trucker*

- PROFILE High Crown
- SIZE One Size Fits Most
- SHAPE Structured
- FABRIC Polyester
- VISOR Pre-Curved
- SWEATBAND Flexible Sweatband
- ADD'L DETAILS Foam Lined Front Panels and Visor, Visor with Cord



Sublimated Patch

**NEW**

OSFM



BLACK/  
BLACK

NEON LIME/  
WHITE

NEON PINK/  
WHITE

RED/  
WHITE

SURF BLUE/  
WHITE

WHITE/  
BLACK/BLACK

WHITE/  
NAVY/RED

WHITE/  
ROYAL/ROYAL

WHITE/  
WHITE

MESH BACK



**EMB: \$12.70**

ASK ABOUT  
LEATHER PATCHES

**MBW-800CB**

*Chambray Mesh Back*

**PROFILE** Pro Round Crown  
**SIZE** One Size Fits Most  
**SHAPE** Structured  
**FABRIC** Cotton Chambray  
**VISOR** Slight Pre-Curved  
**SWEATBAND** Cotton Twill

OSFM



HEATHERED BLACK/BLACK HEATHERED BLACK/WHITE HEATHERED BROWN/WHITE HEATHERED NAVY/WHITE HEATHERED RED/WHITE



3D Embroidery

**EMB: \$10.70**

ASK ABOUT  
LEATHER PATCHES

**MBW-600**

*Twill Mesh Snap Back*

**PROFILE** Low Crown  
**SIZE** One Size Fits Most  
**SHAPE** Structured  
**FABRIC** Cotton Twill  
**VISOR** Pre-Curved  
**SWEATBAND** Cotton Twill  
**ADD'L DETAILS** Contrast Construction Stitch

OSFM



3D Embroidery

**EMB: \$11.10**  
 ASK ABOUT  
 LEATHER PATCHES

**FWT-130SB**

*Garment Washed Snap Back*



Embroidered Patch

**NEW**

<b>PROFILE</b>	Low Crown
<b>SIZE</b>	One Size Fits Most
<b>SHAPE</b>	Unstructured
<b>FABRIC</b>	Cotton Twill
<b>VISOR</b>	Pre-Curved
<b>SWEATBAND</b>	Cotton Sheeting

OSFM



BLACK/BLACK    BLACK/CHARCOAL    BLACK/WHITE    CHARCOAL/WHITE    KHAKI/WHITE    NAVY/WHITE    OLIVE/BLACK    OLIVE/KHAKI

**EMB: \$11.50**  
 ASK ABOUT  
 LEATHER PATCHES

**GWT-101M**

*Garment Washed Trucker Hat*



Sublimated Fabric Patch

<b>PROFILE</b>	Low Crown
<b>SIZE</b>	One Size Fits Most
<b>SHAPE</b>	Structured
<b>FABRIC</b>	Cotton Twill
<b>VISOR</b>	Pre-Curved
<b>SWEATBAND</b>	Cotton Twill
<b>ADD'L DETAILS</b>	Contrast Construction Stitch

OSFM



BAY BLUE/NAVY    BLACK/GREY    BLACK/NEON GREEN    BLACK/RED    BLACK/WHITE    BROWN/PUTTY    CHARCOAL/BLACK    CHARCOAL/NEON GREEN    CHARCOAL/NEON YELLOW    CHARCOAL/WHITE    DARK GREEN/KHAKI    KHAKI/BROWN    LIGHT GREY/BLACK



OLIVE/PUTTY    TRUE NAVY/PUTTY

MESH BACK

**EMB: \$11.10**  
 ASK ABOUT  
 LEATHER PATCHES

**FWT-130**

Garment Washed Hook Loop



Flat Embroidery

**BEST  
SELLER**

<b>PROFILE</b>	Low Crown
<b>SIZE</b>	One Size Fits Most and Youth
<b>SHAPE</b>	Unstructured
<b>FABRIC</b>	Cotton Twill
<b>VISOR</b>	Pre-Curved
<b>SWEATBAND</b>	Cotton Twill

OSFM



YOUTH



**EMB: \$11.10**  
 ASK ABOUT  
 LEATHER PATCHES

**FWT-130L**

Ladies Fit Hook Loop



3D and Flat Embroidery



<b>PROFILE</b>	Low Crown
<b>SIZE</b>	Ladies Fit
<b>SHAPE</b>	Unstructured
<b>FABRIC</b>	Cotton Twill
<b>VISOR</b>	Pre-Curved
<b>SWEATBAND</b>	Cotton Twill

LADIES FIT



MESH BACK



**EMB: \$16.30**  
 ASK ABOUT  
 LEATHER PATCHES

**OC801**

*Heavy Distressed Tea-Stained Mesh*



Flat Embroidery

- PROFILE Low Crown
- SIZE One Size Fits Most
- SHAPE Unstructured
- FABRIC Pigment Dyed Cotton Twill
- VISOR Frayed Pre-Curved
- SWEATBAND Cotton Twill
- ADD'L DETAILS Tea Stain is Unique to Each Cap, Consistency May Vary, Heavy Decorative Stitch on Crown and Visor

OSFM



BAHAMA BLUE/TEA STAIN    BLACK/TEA STAIN    BROWN/TEA STAIN    NAVY/TEA STAIN    RUBY/TEA STAIN    RUST/TEA STAIN    SAGE/TEA STAIN

**EMB: \$16.60**  
 ASK ABOUT  
 LEATHER PATCHES

**OC801P**

*Printed Distressed Tea-Stained Mesh*



Faux Leather Patch

**NEW**

- PROFILE Low Crown
- SIZE One Size Fits Most
- SHAPE Unstructured
- FABRIC Pigment Dyed Cotton Twill
- VISOR Frayed Pre-Curved
- SWEATBAND Cotton Twill
- ADD'L DETAILS Screen Printed Pattern on Front Panels and Visor, Tea Stain is Unique to Each Cap, Consistency May Vary, Heavy Decorative Stitch on Crown and Visor

OSFM



MODERN CHEETAH/POLKA DOT/TEA STAIN    STARS/TEA STAIN

**EMB: \$12.80**  
ASK ABOUT  
LEATHER PATCHES

## PDT20M

*Pigment Dyed Twill Mesh Back*

<b>PROFILE</b>	Pro Round Crown
<b>SIZE</b>	One Size Fits Most
<b>SHAPE</b>	Structured
<b>FABRIC</b>	Pigment Dyed Cotton Twill
<b>VISOR</b>	Slight Pre-Curved
<b>SWEATBAND</b>	Cotton Sheeting
<b>ADD'L DETAILS</b>	Contrast Construction Stitch

OSFM



BLACK/LIGHT GREY/CHARCOAL    BROWN/PUTTY/ ORANGE    CARDINAL/LIGHT GREY/CHARCOAL    GOLD/WHITE/ CHARCOAL    OLIVE/PUTTY/ BROWN



Faux Leather Patch

**NEW**



**EMB: \$14.60**  
 ASK ABOUT  
 LEATHER PATCHES

**PWT-200M**

*Tea-Stained Mesh Back*

**PROFILE** Low Crown  
**SIZE** One Size Fits Most  
**SHAPE** Unstructured  
**FABRIC** Cotton Twill  
**VISOR** Pre-Curved  
**SWEATBAND** Cotton Twill  
**ADD'L DETAILS** Tea Stain is Unique to Each Cap, Consistency May Vary

OSFM



Flat Embroidery

**BEST  
 SELLER**

**EMB: \$16.10**  
 ASK ABOUT  
 LEATHER PATCHES

**PDT-750M**

*Ultra-Soft Mesh Back Cap*

**PROFILE** Low Crown  
**SIZE** One Size Fits Most  
**SHAPE** Unstructured  
**FABRIC** Pigment Dyed Cotton Twill  
**VISOR** Pre-Curved  
**SWEATBAND** Cotton Twill  
**ADD'L DETAILS** Heavy Construction Stitch, Due to the Washing on This Style, Each One Will Look Unique

OSFM



Flat Embroidery

**MESH BACK**

**EMB: \$13.40**  
 ASK ABOUT  
 LEATHER PATCHES

**HPD-615M**

*Premium Rugged Trucker*

**PROFILE** Pro Round Crown  
**SIZE** One Size Fits Most  
**SHAPE** Structured  
**FABRIC** Weathered Cotton  
**VISOR** Slight Pre-Curved  
**SWEATBAND** Cotton Twill

OSFM



BROWN/  
 KHAKE/DUK

NAVY/  
 KHAKE/DUK

OLIVE/  
 KHAKE/DUK



Flat Embroidery

**BEST  
 SELLER**

**EMB: \$13.30**  
 ASK ABOUT  
 LEATHER PATCHES

**WAV-605M**

*Embroidered Wave Mesh Back*

**PROFILE** Low Crown  
**SIZE** One Size Fits Most  
**SHAPE** Structured  
**FABRIC** Cotton Twill  
**VISOR** Pre-Curved  
**SWEATBAND** Cotton Sheeting  
**ADD'L DETAILS** Embroidered Design on Visor

OSFM



BLACK/  
 CHARCOAL

CHARCOAL/  
 BLACK

RED/  
 BLACK



Flat Embroidery

**EMB: \$15.00**  
 ASK ABOUT  
 LEATHER PATCHES

**OC802**

*Etched Camo Weathered Meshback*

<b>PROFILE</b>	Low Crown
<b>SIZE</b>	One Size Fits Most
<b>SHAPE</b>	Structured
<b>FABRIC</b>	Canvas Camo
<b>VISOR</b>	Pre-Curved
<b>SWEATBAND</b>	Cotton Twill

OSFM



BLUE/  
NAVY

GREY/  
BLACK

LIGHT BROWN/  
BROWN

OLIVE/  
OLIVE



Genuine Leather Patch

**EMB: \$18.30**  
 ASK ABOUT  
 LEATHER PATCHES

**OC502M**

*Perforated 5-Panel Mesh Back*

<b>PROFILE</b>	Pro Round Crown
<b>SIZE</b>	One Size Fits Most
<b>SHAPE</b>	Structured
<b>FABRIC</b>	Polyester
<b>VISOR</b>	Slight Pre-Curved
<b>SWEATBAND</b>	Moisture Wicking Polyester
<b>ADD'L DETAILS</b>	Sewn Application Recommended for Decoration

OSFM



BLACK/  
WHITE/WHITE

CHARCOAL/  
BLACK/BLACK

NAVY/  
CHARCOAL/CHARCOAL

NAVY/  
WHITE/RED

ROYAL/  
WHITE/WHITE

WHITE/  
BLACK/BLACK



Custom Shape Faux Leather Patch

**EMB: \$16.70**  
 ASK ABOUT  
 LEATHER PATCHES

**OC503M**

Striped 5-Panel Trucker Cap

<b>PROFILE</b>	Pro Round Crown
<b>SIZE</b>	One Size Fits Most
<b>SHAPE</b>	Structured
<b>FABRIC</b>	Moisture Wicking Polyester
<b>VISOR</b>	Slight Pre-Curved
<b>SWEATBAND</b>	Moisture Wicking Polyester
<b>ADD'L DETAILS</b>	Sewn Application Recommended for Decoration

OSFM



Sublimated Patch

NEW  
COLORS

**EMB: \$9.30**  
 ASK ABOUT  
 LEATHER PATCHES

**GL-415**

5 Panel Mesh Back

<b>PROFILE</b>	Low Crown
<b>SIZE</b>	One Size Fits Most
<b>SHAPE</b>	Structured
<b>FABRIC</b>	Cotton Twill
<b>VISOR</b>	Pre-Curved
<b>SWEATBAND</b>	Cotton Sheeting

OSFM



3D and Flat Embroidery

**EMB: \$9.50**

ASK ABOUT  
LEATHER PATCHES

**GL-155**

5 Panel Mesh Back

PROFILE	High Crown
SIZE	One Size Fits Most
SHAPE	Structured
FABRIC	Cotton Twill
VISOR	Pre-Curved
SWEATBAND	Cotton Sheeting
ADD'L DETAILS	Visor with Cord

OSFM



Flat Embroidery

**EMB: \$18.60**

ASK ABOUT  
LEATHER PATCHES

**REDLBL108**

Mesh Overlay Snap Back

PROFILE	High Crown
SIZE	One Size Fits Most
SHAPE	Structured
FABRIC	Nylon Mesh
VISOR	Flat
SWEATBAND	Cotton Twill
ADD'L DETAILS	Mesh Crown, Sewn Application Recommended for Decoration, Woven Red Label

OSFM



Flat Embroidery

MESH BACK

**EMB: \$17.30**  
 ASK ABOUT  
 LEATHER PATCHES

**OC106**

Seven Panel Mesh Back

<b>PROFILE</b>	Mid Crown
<b>SIZE</b>	One Size Fits Most
<b>SHAPE</b>	Structured
<b>FABRIC</b>	Cotton Twill
<b>VISOR</b>	Slight Pre-Curved
<b>SWEATBAND</b>	Cotton Sheeting

OSFM



BLACK/  
BLACK

OLD GOLD/  
BLACK

OLIVE/  
BLACK



Embroidered Patch

**NEW**

**EMB: \$21.00**  
 ASK ABOUT  
 LEATHER PATCHES

**OC120M**

Performance Phenom Stretch Mesh

<b>PROFILE</b>	Mid Crown
<b>SIZE</b>	XS/S, S/M, M/L, L/XL
<b>SHAPE</b>	Structured
<b>FABRIC</b>	Phenom Performance Twill
<b>VISOR</b>	Slight Pre-Curved
<b>SWEATBAND</b>	Flexible Moisture Wicking Sweatband
<b>ADD'L DETAILS</b>	Black Anti-Glare Undervisor, Crown Piping, Custom Printed Seam Tape

XS/S



BLACK/  
WHITE

GRAPHITE/  
WHITE

NAVY/  
WHITE

RED/  
WHITE

ROYAL/  
WHITE

S/M, M/L, L/XL



BLACK/  
BLACK

BLACK/  
GRAPHITE

BLACK/  
RED

BLACK/  
WHITE

COLUMBIA BLUE/  
WHITE

DARK GREEN/  
WHITE

GRAPHITE/  
BLACK

GRAPHITE/  
WHITE

HEATHERED  
GRAPHITE/BLACK

HEATHERED  
GRAPHITE/WHITE

MAROON/  
WHITE

NAVY/  
GRAPHITE

NAVY/  
WHITE

NAVY/  
WHITE/RED

PURPLE/  
WHITE

RED/  
WHITE/BLACK

RED/  
WHITE

RED/  
WHITE/ROYAL

ROYAL/  
WHITE

WHITE/  
BLACK/BLACK

WHITE/  
NAVY/NAVY

WHITE/  
RED/RED



3D Embroidery

**PROFLEX**

MESH BACK



# SOLID



**EMB: \$13.30**  
ASK ABOUT  
LEATHER PATCHES



Genuine Leather Patch

**BEST  
SELLER**

**NEW  
COLORS**

## OC871

*Premium Modern Solid Back*

- PROFILE** Pro Round Crown
- SIZE** One Size Fits Most
- SHAPE** Structured
- FABRIC** Cotton Twill
- VISOR** Slight Pre-Curved
- SWEATBAND** Cotton Twill
- ADD'L DETAILS** Fiber Content Varies by Color, See Website for Details

OSFM



SOLID

# EMB: \$15.00

ASK ABOUT  
LEATHER PATCHES

## OC602

Modern Solid W/Cord

PROFILE	Mid Crown
SIZE	One Size Fits Most
SHAPE	Structured
FABRIC	Buttery Twill
VISOR	Slight Pre-Curved
SWEATBAND	Buttery Twill
ADD'L DETAILS	Visor with Cord

OSFM



BLACK

CANYON

LAKE RED

WAYLAND BLUE

OLIVE

STEEL



Sublimated Patch

**NEW**



**EMB: \$19.40**  
 ASK ABOUT  
 LEATHER PATCHES



**OC803**

*Lightweight Perforated Performance*

Sublimated Patch

<b>PROFILE</b>	Low Crown
<b>SIZE</b>	One Size Fits Most
<b>SHAPE</b>	Structured
<b>FABRIC</b>	Polyester
<b>VISOR</b>	Pre-Curved
<b>SWEATBAND</b>	Moisture Wicking Polyester
<b>ADD'L DETAILS</b>	Perforated Side and Back Panels, Sewn Application Recommended for Decoration

OSFM



**EMB: \$25.50**  
 ASK ABOUT  
 LEATHER PATCHES



**OC900**

*Split Panel Performance Snapback*

Sublimated Patch

<b>PROFILE</b>	High Crown
<b>SIZE</b>	One Size Fits Most
<b>SHAPE</b>	Structured
<b>FABRIC</b>	Polyester/Spandex
<b>VISOR</b>	Flat
<b>SWEATBAND</b>	ProFlex® Adjustable Sweatband



OSFM



**EMB: \$14.80**  
 ASK ABOUT  
 LEATHER PATCHES



**PN-100**

*Ultimate Lightweight Performance Cap*

<b>PROFILE</b>	Low Crown
<b>SIZE</b>	One Size Fits Most
<b>SHAPE</b>	Unstructured
<b>FABRIC</b>	Moisture Wicking Polyester
<b>VISOR</b>	Pre-Curved
<b>SWEATBAND</b>	Moisture Wicking Polyester
<b>ADD'L DETAILS</b>	UPF Rated 50+, Sewn Application Recommended for Decoration

Sublimated Patch



OSFM



**EMB: \$17.70**  
 ASK ABOUT  
 LEATHER PATCHES



**OC601**

*Performance Service Stripe Cap*

<b>PROFILE</b>	Mid Crown
<b>SIZE</b>	One Size Fits Most
<b>SHAPE</b>	Structured
<b>FABRIC</b>	Moisture Wicking Polyester
<b>VISOR</b>	Pre-Curved
<b>SWEATBAND</b>	Moisture Wicking Polyester
<b>ADD'L DETAILS</b>	Woven Flag Label on Visor

Faux Leather Patch



OSFM



**EMB: \$15.00**  
ASK ABOUT  
LEATHER PATCHES

**RPET100**

*Recycled Solid Back*

PROFILE	Mid Crown
SIZE	One Size Fits Most
SHAPE	Unstructured
FABRIC	Certified Recycled PET
VISOR	Pre-Curved
SWEATBAND	Certified Recycled PET



Sublimated Patch



OSFM



BLACK

CHARCOAL

KHAKI

NAVY

OLIVE

**EMB: \$15.90**  
ASK ABOUT  
LEATHER PATCHES

**REDLBL101**

*Classic 6 Panel Snap Back*

PROFILE	High Crown
SIZE	One Size Fits Most
SHAPE	Structured
FABRIC	Polyester Twill
VISOR	Flat
SWEATBAND	Cotton Twill
ADD'L DETAILS	Woven Red Label, Heathered Grey is Acrylic/Wool



Embroidered Patch

OSFM



BLACK

HEATHERED GREY

NAVY

**EMB: \$21.20**  
ASK ABOUT  
LEATHER PATCHES

**REDLBL110**

*Hemp Snap Back*

PROFILE	Pro Round Crown
SIZE	One Size Fits Most
SHAPE	Structured
FABRIC	Hemp Blend
VISOR	Slight Pre-Curved
SWEATBAND	Moisture Wicking Polyester
ADD'L DETAILS	Woven Red Label



Genuine Leather Patch



OSFM



GREY

**EMB: \$14.10**  
ASK ABOUT  
LEATHER PATCHES

**OC505**

*Five Panel Camper*

PROFILE	Camper
SIZE	One Size Fits Most
SHAPE	Structured
FABRIC	Cotton Twill
VISOR	Flat
SWEATBAND	Cotton Twill



Faux Leather Patch

**NEW**

OSFM



BLACK CANYON BROWN NAVY OLIVE

**EMB: \$16.30**  
ASK ABOUT  
LEATHER PATCHES

**BC-615**

*Performance Solid Back*

PROFILE	Low Crown
SIZE	One Size Fits Most
SHAPE	Structured
FABRIC	Polyester with Bamboo Charcoal Attributes
VISOR	Pre-Curved
SWEATBAND	Moisture Wicking Polyester
ADD'L DETAILS	Custom Printed Seam Tape



Flat Embroidery

**Bamboo Charcoal**

OSFM



BLACK NAVY

**EMB: \$12.00**  
ASK ABOUT  
LEATHER PATCHES

**DUK-111SB**

*DUK Canvas Snapback*

PROFILE	Mid Crown
SIZE	One Size Fits Most
SHAPE	Unstructured
FABRIC	Cotton Canvas
VISOR	Pre-Curved
SWEATBAND	Cotton Sheeting



Sublimated Patch

**NEW**

OSFM



BLACK BROWN NAVY

**EMB: \$13.20**

ASK ABOUT  
LEATHER PATCHES

**DUK-800**

Washed Canvas Solid Back

PROFILE	Pro Round Crown
SIZE	One Size Fits Most
SHAPE	Structured
FABRIC	Cotton Canvas
VISOR	Slight Pre-Curved
SWEATBAND	Moisture Wicking Polyester



Flat Embroidery

OSFM



BROWN

**EMB: \$9.10**

ASK ABOUT  
LEATHER PATCHES

**BCT-600**

Structured Brushed Twill Solid Back

PROFILE	Mid Crown
SIZE	One Size Fits Most
SHAPE	Structured
FABRIC	Brushed Cotton Twill
VISOR	Pre-Curved
SWEATBAND	Cotton Twill



Embroidered Fabric Patch

**BEST  
SELLER**

OSFM



**EMB: \$11.50**

ASK ABOUT  
LEATHER PATCHES

**GWT-101**

Garment Washed Solid Back

PROFILE	Low Crown
SIZE	One Size Fits Most
SHAPE	Structured
FABRIC	Cotton Twill
VISOR	Pre-Curved
SWEATBAND	Cotton Twill
ADD'L DETAILS	Contrast Stitch Visor, Charcoal/Black has Lime Green Contrast Stitch



Flat Embroidery

OSFM



**EMB: \$9.70**  
 ASK ABOUT  
 LEATHER PATCHES



3D Embroidery

**GL-455**

5 Panel Solid Back

<b>PROFILE</b>	Low Crown
<b>SIZE</b>	One Size Fits Most and Youth
<b>SHAPE</b>	Structured
<b>FABRIC</b>	Cotton Twill
<b>VISOR</b>	Pre-Curved
<b>SWEATBAND</b>	Cotton Sheeting

OSFM



BLACK LIGHT GREY NAVY RED ROYAL

YOUTH



BLACK LIGHT GREY NAVY RED ROYAL

**EMB: \$13.00**  
 ASK ABOUT  
 LEATHER PATCHES



3D Embroidery

**JM-123**

Retro Jersey Mesh Solid Back

<b>PROFILE</b>	Low Crown
<b>SIZE</b>	One Size Fits Most and Youth
<b>SHAPE</b>	Structured
<b>FABRIC</b>	Polyester Jersey Mesh
<b>VISOR</b>	Pre-Curved
<b>SWEATBAND</b>	Cotton Sheeting
<b>ADD'L DETAILS</b>	Grey Undervisor

OSFM



BLACK CHARCOAL LIGHT GREY NAVY RED ROYAL

YOUTH



BLACK CHARCOAL LIGHT GREY NAVY RED ROYAL



**EMB: \$10.40**  
 ASK ABOUT  
 LEATHER PATCHES



**GL-845**

*Brushed Twill W/Sandwich Visor*

Flat Embroidery

<b>PROFILE</b>	Mid Crown
<b>SIZE</b>	One Size Fits Most
<b>SHAPE</b>	Structured
<b>FABRIC</b>	Brushed Cotton Twill
<b>VISOR</b>	Pre-Curved
<b>SWEATBAND</b>	Cotton Sheeting
<b>ADD'L DETAILS</b>	Contrasting Button and Eyelets

OSFM



BLACK/RED    BLACK/WHITE    CHARCOAL/BLACK    KHAKI/BLACK    NAVY/WHITE    RED/BLACK    ROYAL/WHITE

**EMB: \$9.70**  
 ASK ABOUT  
 LEATHER PATCHES



**GL-271**

*Twill Solid Back Cap*

3D Embroidery

<b>PROFILE</b>	Low Crown
<b>SIZE</b>	One Size Fits Most and Yc
<b>SHAPE</b>	Structured
<b>FABRIC</b>	Cotton Twill
<b>VISOR</b>	Pre-Curved
<b>SWEATBAND</b>	Cotton Sheeting

OSFM



BLACK    COLUMBIA BLUE    DARK GREEN    GOLD    GRAPHITE    KELLY    KHAKI    LIGHT GREY    MAROON    NAVY    ORANGE    PURPLE    RED

ROYAL    WHITE    BLACK/RED    KHAKI/BLACK    KHAKI/DARK GREEN    KHAKI/NAVY    LIGHT GREY/BLACK    NAVY/RED    RED/BLACK

YOUTH



BLACK    COLUMBIA BLUE    DARK GREEN    GOLD    GRAPHITE    KELLY    LIGHT GREY    MAROON    NAVY    ORANGE    PURPLE    RED    ROYAL

WHITE    BLACK/RED    LIGHT GREY/BLACK    NAVY/RED    RED/BLACK

# EMB: \$14.50

ASK ABOUT  
LEATHER PATCHES



Embroidered Patch

**NEW**

## PTM-850

Performance ProTech Mesh

<b>PROFILE</b>	Mid Crown
<b>SIZE</b>	One Size Fits Most and Youth
<b>SHAPE</b>	Structured
<b>FABRIC</b>	Polyester
<b>VISOR</b>	Slight Pre-Curved
<b>SWEATBAND</b>	Moisture Wicking Polyester

### OSFM



### YOUTH



**EMB: \$11.20**  
 ASK ABOUT  
 LEATHER PATCHES

**GWT-111**

Garment Washed Dad Cap

<b>PROFILE</b>	Low Crown
<b>SIZE</b>	One Size Fits Most
<b>SHAPE</b>	Unstructured
<b>FABRIC</b>	Cotton Twill
<b>VISOR</b>	Pre-Curved
<b>SWEATBAND</b>	Cotton Twill



3D and Flat Embroidery

**BEST  
 SELLER**

OSFM



**EMB: \$9.90**  
 ASK ABOUT  
 LEATHER PATCHES

**GWT-116**

*Unstructured Garment Washed*



Flat Embroidery

<b>PROFILE</b>	Low Crown
<b>SIZE</b>	One Size Fits Most
<b>SHAPE</b>	Unstructured
<b>FABRIC</b>	Cotton Twill
<b>VISOR</b>	Pre-Curved
<b>SWEATBAND</b>	Cotton Twill

OSFM



**EMB: \$14.80**  
 ASK ABOUT  
 LEATHER PATCHES

**PN-100U**

*Ultimate Lightweight Performance Cap*



Flat Embroidery

<b>PROFILE</b>	Low Crown
<b>SIZE</b>	One Size Fits Most
<b>SHAPE</b>	Unstructured
<b>FABRIC</b>	Moisture Wicking Polyester
<b>VISOR</b>	Pre-Curved
<b>SWEATBAND</b>	Moisture Wicking Polyester
<b>ADD'L DETAILS</b>	UPF Rated 50+, Sewn Application Recommended for Decoration



OSFM



**EMB: \$16.80**  
 ASK ABOUT  
 LEATHER PATCHES

**OC504**

Packable 5 Panel Cap with Cord

<b>PROFILE</b>	Mid Crown
<b>SIZE</b>	One Size Fits Most
<b>SHAPE</b>	Unstructured
<b>FABRIC</b>	Moisture Wicking Polyester
<b>VISOR</b>	Flat
<b>SWEATBAND</b>	Moisture Wicking Polyester
<b>ADD'L DETAILS</b>	Packable



Sublimated Patch

**NEW  
 COLORS**

OSFM



**EMB: \$15.90**  
 ASK ABOUT  
 LEATHER PATCHES

**PDT-750**

Pigment Dyed Twill Solid Back

<b>PROFILE</b>	Low Crown
<b>SIZE</b>	One Size Fits Most
<b>SHAPE</b>	Unstructured
<b>FABRIC</b>	Pigment Dyed Cotton Twill
<b>VISOR</b>	Pre-Curved
<b>SWEATBAND</b>	Cotton Twill
<b>ADD'L DETAILS</b>	Heavy Construction Stitch, Due to the Washing on This Style, Each One Will Look Unique



Genuine Leather Patch

OSFM



**EMB: \$15.00**

ASK ABOUT  
LEATHER PATCHES

**PWT-100LTH**

*Twill W/Leather Strap Closure*

- PROFILE Low Crown
- SIZE One Size Fits Most
- SHAPE Unstructured
- FABRIC Cotton Twill
- VISOR Pre-Curved
- SWEATBAND Cotton Twill
- ADD'L DETAILS Heavy Decorative Stitch on Visor, Genuine Leather Strap Buckle Closure

OSFM



BLACK GRAPHITE NAVY



Flat Embroidery

**EMB: \$9.10**  
ASK ABOUT  
LEATHER PATCHES

**BCT-662**

*Unstructured Brushed Twill Solid Back*

- PROFILE Mid Crown
- SIZE One Size Fits Most
- SHAPE Unstructured
- FABRIC Brushed Cotton Twill
- VISOR Pre-Curved
- SWEATBAND Cotton Twill

OSFM



BLACK BURGUNDY CHARCOAL KHAKI LODEN NAVY RED ROYAL WHITE



Flat Embroidery

**BEST  
SELLER**

# PROFLEX®



CAGE25 FEATURED

**EMB: \$18.40**  
ASK ABOUT  
LEATHER PATCHES



## RGR-360M

*ProFlex® Adjustable Mesh Back*

Sublimated Patch

<b>PROFILE</b>	Pro Round Crown
<b>SIZE</b>	ProFlex® Adjustable
<b>SHAPE</b>	Structured
<b>FABRIC</b>	Cotton Twill
<b>VISOR</b>	Slight Pre-Curved
<b>SWEATBAND</b>	Flexible Sweatband
<b>ADD'L DETAILS</b>	ProFlex® Adjustable Sweatband

**BEST  
SELLER**



### OSFM



**EMB: \$21.00**  
 ASK ABOUT  
 LEATHER PATCHES



**OC120M**

Performance Phenom Stretch Mesh

3D Embroidery



<b>PROFILE</b>	Mid Crown
<b>SIZE</b>	XS/S, S/M, M/L, L/XL
<b>SHAPE</b>	Structured
<b>FABRIC</b>	Phenom Performance Twill
<b>VISOR</b>	Slight Pre-Curved
<b>SWEATBAND</b>	Flexible Moisture Wicking Sweatband
<b>ADD'L DETAILS</b>	Black Anti-Glare Undervisor, Crown Piping, Custom Printed Seam Tape

XS/S



S/M, M/L, L/XL



**EMB: \$19.20**  
 ASK ABOUT  
 LEATHER PATCHES



**CAGE25**

Performance Cage Mesh

Embroidered Patch

<b>PROFILE</b>	High Crown
<b>SIZE</b>	S/M, M/L, L/XL
<b>SHAPE</b>	Structured
<b>FABRIC</b>	Cage Mesh Polyester
<b>VISOR</b>	Flat
<b>SWEATBAND</b>	Flexible Moisture Wicking Sweatband
<b>ADD'L DETAILS</b>	Black Anti-Glare Undervisor



S/M, M/L, L/XL





**EMB: \$21.00**  
 ASK ABOUT  
 LEATHER PATCHES



**AIR25**

*ProFlex® Perforated Performance*

Flat Embroidery

<b>PROFILE</b>	Mid Crown
<b>SIZE</b>	S/M, M/L, L/XL
<b>SHAPE</b>	Structured
<b>FABRIC</b>	Polyester
<b>VISOR</b>	Slight Pre-Curved
<b>SWEATBAND</b>	Moisture Wicking Sweatband
<b>ADD'L DETAILS</b>	Front & Back Embroidery Only, Black Anti-Glare Undervisor, Perforated Side Panels



S/M, M/L, L/XL



**EMB: \$21.00**  
 ASK ABOUT  
 LEATHER PATCHES



**AIR50**

*ProFlex® Adjustable Performance*

3D and Flat Embroidery

<b>PROFILE</b>	Pro Round Crown
<b>SIZE</b>	One Size Fits Most
<b>SHAPE</b>	Structured
<b>FABRIC</b>	Polyester/Spandex
<b>VISOR</b>	Slight Pre-Curved
<b>SWEATBAND</b>	Moisture Wicking Sweatband
<b>ADD'L DETAILS</b>	Front & Back Embroidery Only, Black Anti-Glare Undervisor, Perforated Side Panels



OSFM



# EMB: \$19.70

ASK ABOUT  
LEATHER PATCHES



## TGS1930X

ProFlex® Bamboo Charcoal W/Flat Visor

3D Embroidery

<b>PROFILE</b>	Mid Crown
<b>SIZE</b>	XS/S, S/M, M/L, L/XL, XL/XXL
<b>SHAPE</b>	Structured
<b>FABRIC</b>	Polyester with Bamboo Charcoal Attributes
<b>VISOR</b>	Flat
<b>SWEATBAND</b>	Flexible Moisture Wicking Sweatband
<b>ADD'L DETAILS</b>	White is Polyester, Custom Printed Seam Tape



XS/S, S/M, M/L, L/XL



XL/XXL



# LADIES



OC801P FEATURED

**EMB: \$15.40**

ASK ABOUT  
LEATHER PATCHES

**OC902**

*Heavy Washed Patch Cap*



Flat Embroidery



<b>PROFILE</b>	Low Crown
<b>SIZE</b>	Ladies Fit
<b>SHAPE</b>	Unstructured
<b>FABRIC</b>	Pigment Dyed Cotton Twill
<b>VISOR</b>	Frayed Pre-Curved
<b>SWEATBAND</b>	Cotton Twill
<b>DECORATION</b>	Frayed Fabric Patch
<b>ADD'L DETAILS</b>	Heavy Construction Stitch, Frayed Front Patch for Decorating, Due to the Washing on This Style, Each One Will Look Unique.

LADIES FIT



BLACK

CORAL

MINT

NAVY

SAGE

**EMB: \$12.60**

ASK ABOUT  
LEATHER PATCHES

**OC770L**

*Low Pro Ladies Trucker*

PROFILE	Pro Round Crown
SIZE	Ladies Fit
SHAPE	Structured
FABRIC	Heathered Polyester
VISOR	Slight Pre-Curved
SWEATBAND	Cotton Twill



Faux Leather Patch



LADIES FIT



**EMB: \$11.10**

ASK ABOUT  
LEATHER PATCHES

**FWT-130L**

*Ladies Fit Hook Loop*

PROFILE	Low Crown
SIZE	Ladies Fit
SHAPE	Unstructured
FABRIC	Cotton Twill
VISOR	Pre-Curved
SWEATBAND	Cotton Twill



3D and Flat Embroidery



LADIES FIT



**EMB: \$16.60**

ASK ABOUT  
LEATHER PATCHES

**OC801P**

*Printed Distressed Tea-Stained Mesh*

PROFILE	Low Crown
SIZE	One Size Fits Most
SHAPE	Unstructured
FABRIC	Pigment Dyed Cotton Twill
VISOR	Frayed Pre-Curved
SWEATBAND	Cotton Twill
ADD'L DETAILS	Screen Printed Pattern on Front Panels and Visor, Tea Stain is Unique to Each Cap, Consistency May Vary, Heavy Decorative Stitch on Crown and Visor



Faux Leather Patch



OSFM



**EMB: \$14.80**

ASK ABOUT  
LEATHER PATCHES

**PNY-100M**

Ladies Fit W/Ponytail Mesh Back

<b>PROFILE</b>	Low Crown
<b>SIZE</b>	Ladies Fit
<b>SHAPE</b>	Structured
<b>FABRIC</b>	Cotton Twill
<b>VISOR</b>	Pre-Curved
<b>SWEATBAND</b>	Cotton Twill
<b>ADD'L DETAILS</b>	Front and Side Decoration Only, Due to the Washing on This Style, Each One Will Look Unique.

3D Embroidery

**BEST  
SELLER**



LADIES FIT



BLACK/  
TEA STAIN

BLACK/  
WHITE

COASTAL BLUE/  
TEA STAIN

CORAL/  
TEA STAIN

DUSTY YELLOW/  
TEA STAIN

LAVENDER/  
TEA STAIN

MINT/  
TEA STAIN

NAVY/  
TEA STAIN

NAVY/  
WHITE

OLIVE/  
TEA STAIN

RED/  
TEA STAIN

RED/  
WHITE

ROYAL/  
WHITE



SKY BLUE/  
TEA STAIN

**EMB: \$19.30**

ASK ABOUT  
LEATHER PATCHES

**OC805**

Ladies Cable Knit Faux Fur Pom

<b>PROFILE</b>	Beanie
<b>SIZE</b>	One Size Fits Most
<b>FABRIC</b>	Acrylic Knit
<b>DECORATION</b>	Debossed Faux Leather Wrap Label
<b>ADD'L DETAILS</b>	9" w x 8.5" h (Not Including Pom), Faux Fur Pom

Faux Leather Patch



OSFM



BLACK



CHARCOAL



IVORY



ROSE GOLD

# YOUTH



PTM-850 FEATURED

**EMB: \$14.50**  
ASK ABOUT  
LEATHER PATCHES



Embroidered Patch

**NEW**

## PTM-850

Performance ProTech Mesh

<b>PROFILE</b>	Mid Crown
<b>SIZE</b>	Youth
<b>SHAPE</b>	Structured
<b>FABRIC</b>	Polyester
<b>VISOR</b>	Slight Pre-Curved
<b>SWEATBAND</b>	Moisture Wicking Polyester
<b>ADD'L DETAILS</b>	See Page 41 for Adult Options

### YOUTH



**EMB: \$12.60**  
ASK ABOUT  
LEATHER PATCHES

**OC771**

Premium Modern Trucker

PROFILE	Pro Round Crown
SIZE	Youth
SHAPE	Structured
FABRIC	Cotton Twill
VISOR	Slight Pre-Curved
SWEATBAND	Cotton Twill
ADD'L DETAILS	Comfort Cotton Sweatband, Contrast Construction Stitch, Fiber Content Varies by Color, See Website for Details, See Page 13 for Adult Options



Sublimated Patch

**BEST  
SELLER**

YOUTH



**EMB: \$11.10**  
ASK ABOUT  
LEATHER PATCHES

**FWT-130**

Garment Washed Trucker Hat

PROFILE	Low Crown
SIZE	Youth
SHAPE	Unstructured
FABRIC	Cotton Twill
VISOR	Pre-Curved
SWEATBAND	Cotton Twill
ADD'L DETAILS	See Page 23 for Adult Options



3D Embroidery

**BEST  
SELLER**

YOUTH



**EMB: \$9.70**  
ASK ABOUT  
LEATHER PATCHES

**GL-455**

5 Panel Solid Back

PROFILE	Low Crown
SIZE	Youth
SHAPE	Structured
FABRIC	Cotton Twill
VISOR	Pre-Curved
SWEATBAND	Cotton Sheeting
ADD'L DETAILS	See Page 39 for Adult Options



3D Embroidery

YOUTH



YOUTH

**EMB: \$13.00**  
 ASK ABOUT  
 LEATHER PATCHES



3D Embroidery

**JM-123**

*Retro Jersey Mesh Solid Back*

<b>PROFILE</b>	Low Crown
<b>SIZE</b>	Youth
<b>SHAPE</b>	Structured
<b>FABRIC</b>	Polyester Jersey Mesh
<b>VISOR</b>	Pre-Curved
<b>SWEATBAND</b>	Cotton Sheeting
<b>ADD'L DETAILS</b>	Grey Undervisor, See Page 39 for Adult Options

YOUTH



BLACK CHARCOAL LIGHT GREY NAVY RED ROYAL

**EMB: \$9.70**  
 ASK ABOUT  
 LEATHER PATCHES



Faux Leather Patch

**GL-271**

*Twill Solid Back Cap*

<b>PROFILE</b>	Low Crown
<b>SIZE</b>	Youth
<b>SHAPE</b>	Structured
<b>FABRIC</b>	Cotton Twill
<b>VISOR</b>	Pre-Curved
<b>SWEATBAND</b>	Cotton Sheeting
<b>ADD'L DETAILS</b>	See Page 40 for Adult Options

YOUTH



BLACK COLUMBIA BLUE DARK GREEN GOLD GRAPHITE KELLY LIGHT GREY MAROON NAVY ORANGE PURPLE RED ROYAL  
 WHITE BLACK/RED LIGHT GREY/BLACK RED/BLACK NAVY/RED



**EMB: \$10.60**  
 ASK ABOUT  
 LEATHER PATCHES



Faux Leather Patch

**PCTV-100**

*Premium Twill Visor*

- PROFILE Visor
- SIZE Youth
- FABRIC Cotton Twill
- VISOR Pre-Curved
- SWEATBAND Cotton Sheeting
- ADD'L DETAILS 2 1/4" Crown Height, See Page 68 for Adult Options

YOUTH



BLACK COLUMBIA BLUE LIGHT GREY NAVY PURPLE RED ROYAL WHITE

**EMB: \$12.80**  
 ASK ABOUT  
 LEATHER PATCHES



Sublimated Patch

**301IS**

*Camo Snap Back*

- PROFILE Pro Round Crown
- SIZE Youth
- SHAPE Structured
- FABRIC Canvas Camo
- VISOR Slight Pre-Curved
- SWEATBAND Cotton Sheeting
- ADD'L DETAILS Blaze Made of Polyester, See Page 85 for Adult Options

YOUTH



BLAZE MOSSY OAK® COUNTRY DNA® REALTREE EDGE®

# STARS & STRIPES

OC601 FEATURED

**EMB: \$16.60**

ASK ABOUT  
LEATHER PATCHES

## OC771PM

*Premium Modern Trucker*

<b>PROFILE</b>	Pro Round Crown
<b>SIZE</b>	One Size Fits Most
<b>SHAPE</b>	Structured
<b>FABRIC</b>	Cotton Twill
<b>VISOR</b>	Slight Pre-Curved
<b>SWEATBAND</b>	Cotton Twill
<b>DECORATION</b>	Sublimated Mesh Back Panels
<b>ADD'L DETAILS</b>	Comfort Cotton Sweatband, Contrast Construction Stitch, Fiber Content Varies by Color, See Website For Details



3D and Flat Embroidery

OSFM



BLACK/BLACK USA



BLACK/MEXICAN FLAG



LN HEATHERED GREY/TX



LN HEATHERED GREY/USA

**EMB: \$15.50**

ASK ABOUT  
LEATHER PATCHES

**USA-300**

*Brushed Twill W/Flag Visor Insert*

PROFILE	Mid Crown
SIZE	One Size Fits Most
SHAPE	Structured
FABRIC	Brushed Cotton Twill
VISOR	Pre-Curved
SWEATBAND	Cotton Twill
ADD'L DETAILS	American Flag Woven Label Visor



3D and Flat Embroidery

OSFM



**EMB: \$17.70**

ASK ABOUT  
LEATHER PATCHES

**OC601**

*Performance Service Stripe Cap*

PROFILE	Mid Crown
SIZE	One Size Fits Most
SHAPE	Structured
FABRIC	Moisture Wicking Polyester
VISOR	Pre-Curved
SWEATBAND	Moisture Wicking Polyester
ADD'L DETAILS	Woven Flag Label on Visor



Faux Leather Patch

NEW  
COLORS

OSFM



**EMB: \$18.10**

ASK ABOUT  
LEATHER PATCHES

**USA-750M**

*Debossed American Flag Mesh Back*

PROFILE	Low Crown
SIZE	One Size Fits Most
SHAPE	Structured
FABRIC	Polyester/Spandex
VISOR	Pre-Curved
SWEATBAND	Cotton Twill
ADD'L DETAILS	Debossed Stars and Stripes Pattern, Sewn Application Recommended for Decoration



Genuine Leather Patch

OSFM



**EMB: \$12.40**  
 ASK ABOUT  
 LEATHER PATCHES

**USA-800**

*Structured Twill W/Flag Sandwich Visor*

PROFILE	Mid Crown
SIZE	One Size Fits Most
SHAPE	Structured
FABRIC	Cotton Twill
VISOR	Woven Sandwich Visor
SWEATBAND	Cotton Sheeting
ADD'L DETAILS	Contrast Heavy Construction Stitch



Flat Embroidery

OSFM



CARDINAL

KHAKI

NAVY

**EMB: \$12.60**  
 ASK ABOUT  
 LEATHER PATCHES

**USA-800M**

*Twill Mesh Back W/Flag Sandwich Visor*

PROFILE	Mid Crown
SIZE	One Size Fits Most
SHAPE	Structured
FABRIC	Cotton Twill
VISOR	Woven Sandwich Visor
SWEATBAND	Cotton Sheeting
ADD'L DETAILS	Contrast Heavy Construction Stitch



Flat Embroidery

OSFM



KHAKI

NAVY

**EMB: \$12.40**  
 ASK ABOUT  
 LEATHER PATCHES

**USA-850**

*Unstructured Twill W/Flag Sandwich Visor*

PROFILE	Low Crown
SIZE	One Size Fits Most
SHAPE	Unstructured
FABRIC	Cotton Twill
VISOR	Woven Sandwich Visor
SWEATBAND	Cotton Twill
ADD'L DETAILS	Contrast Heavy Construction Stitch



Flat Embroidery

OSFM



KHAKI

NAVY

**EMB: \$13.50**

ASK ABOUT  
LEATHER PATCHES

### TAC-500

Tactical Unstructured W/Flag

PROFILE	Low Crown
SIZE	One Size Fits Most
SHAPE	Unstructured
FABRIC	Cotton Twill
VISOR	Pre-Curved
SWEATBAND	Moisture Wicking Polyester
DECORATION	Flat Stitch On Scout Patch
ADD'L DETAILS	Easy Fit with Earpiece or Glasses, No Top Button to Interfere with a Headset, American Flag on Left Side



Flat Embroidery

OSFM



**EMB: \$15.70**

ASK ABOUT  
LEATHER PATCHES

### TAC-600

Tactical Unstructured Camo W/Flag

PROFILE	Low Crown
SIZE	One Size Fits Most
SHAPE	Unstructured
FABRIC	Canvas Camo
VISOR	Pre-Curved
SWEATBAND	Moisture Wicking Polyester
DECORATION	Flat Stitch On Scout Patch
ADD'L DETAILS	Easy Fit with Earpiece or Glasses, No Top Button to Interfere with a Headset, American Flag on Left Side



Flat Embroidery



OSFM



**EMB: \$15.80**

ASK ABOUT  
LEATHER PATCHES

### CWF-400M

American Flag Camo Mesh Back

PROFILE	Low Crown
SIZE	One Size Fits Most
SHAPE	Structured
FABRIC	Canvas Camo
VISOR	Pre-Curved
SWEATBAND	Cotton Sheeting
ADD'L DETAILS	Contrast Heavy Decorative Stitch on Visor, Sublimated Mesh Back Panels



Flat Embroidery

OSFM



MOSSY OAK® COUNTRY DNA® / AMERICAN FLAG / MOSSY OAK® COUNTRY DNA® / TEXAS FLAG

STARS & STRIPES

**EMB: \$16.80**

ASK ABOUT  
LEATHER PATCHES

**CWF-310**

Mesh Back W/Camo Flag Undervisor

PROFILE	Low Crown
SIZE	One Size Fits Most
SHAPE	Unstructured
FABRIC	Canvas Camo
VISOR	Pre-Curved
SWEATBAND	Cotton Twill
ADD'L DETAILS	Flag Water Print on Undervisor, Contrast Stitch on Visor



Flat Embroidery

OSFM



**EMB: \$18.30**

ASK ABOUT  
LEATHER PATCHES

**SUS-100**

Sublimated Flag Front W/Camo Back

PROFILE	Low Crown
SIZE	One Size Fits Most
SHAPE	Structured
FABRIC	Canvas Camo
VISOR	Pre-Curved
SWEATBAND	Cotton Sheeting
DECORATION	Sublimation on Front Panels
ADD'L DETAILS	Contrast Heavy Decorative Stitch on Visor



3D and Flat Embroidery

OSFM



**EMB: \$16.10**

ASK ABOUT  
LEATHER PATCHES

**USA-350**

Camo W/Woven Flag

PROFILE	Mid Crown
SIZE	One Size Fits Most
SHAPE	Structured
FABRIC	Canvas Camo
VISOR	Woven Sandwich Visor
SWEATBAND	Cotton Sheeting
ADD'L DETAILS	Contrast Construction Stitch on Crown and Visor



3D and Flat Embroidery

OSFM



**EMB: \$15.20**  
 ASK ABOUT  
 LEATHER PATCHES

**CWF-305**

*Structured W/Camo Flag Visor Insert*

<b>PROFILE</b>	Low Crown
<b>SIZE</b>	One Size Fits Most
<b>SHAPE</b>	Structured
<b>FABRIC</b>	Canvas Camo
<b>VISOR</b>	Pre-Curved
<b>SWEATBAND</b>	Cotton Twill
<b>ADD'L DETAILS</b>	Woven Flag Label on Visor and Back Arch

OSFM



Embroidered Patch

**EMB: \$17.00**  
 ASK ABOUT  
 LEATHER PATCHES

**CWF-315**

*Solid Back W/Camo Flag Undervisor*

<b>PROFILE</b>	Low Crown
<b>SIZE</b>	One Size Fits Most
<b>SHAPE</b>	Unstructured
<b>FABRIC</b>	Canvas Camo
<b>VISOR</b>	Pre-Curved
<b>SWEATBAND</b>	Cotton Twill
<b>ADD'L DETAILS</b>	Flag Water Print on Undervisor, Contrast Construction Stitch

OSFM



Sublimated Patch

**EMB: \$15.90**  
 ASK ABOUT  
 LEATHER PATCHES

**AGC-100**

*Fashion Camo Twill W/Flag*

PROFILE	Low Crown
SIZE	One Size Fits Most
SHAPE	Unstructured
FABRIC	Cotton Twill
VISOR	Pre-Curved
SWEATBAND	Cotton Sheeting
DECORATION	USA Flag Woven Label
ADD'L DETAILS	Contrast Heavy Construction Stitch



Flat Embroidery

OSFM



**EMB: \$17.20**  
 ASK ABOUT  
 LEATHER PATCHES

**KNF-USA**

*Americana Watch Cap W/Pom*

PROFILE	Watch Cap
SIZE	One Size Fits Most
FABRIC	Acrylic Knit
ADD'L DETAILS	9.5" w x 8.5" h (Not Including Pom), 2 1/2" Cuff, Pom, Black Polyester Fleece Lined Crown, Jacquard Stars & Stripes



Flat Embroidery

OSFM

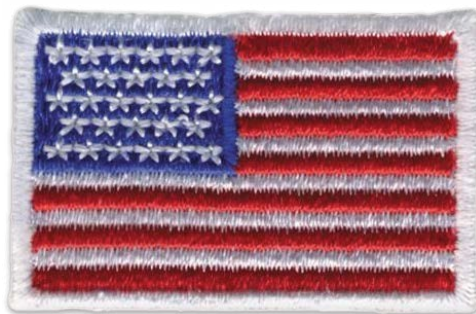


**EMB: \$8.40**

**FLAG**

*Heat Seal Patch*

ADD'L DETAILS	Heat Seal Patch, Image Shown Not Actual Size, Small: 1.5" x 1", Large: 3.5" x 2", Can be Ironed or Sewn On
---------------	--







# SUNBLOCKER

OC200 FEATURED

**EMB: \$16.20**

ASK ABOUT  
LEATHER PATCHES



Faux Leather Patch

**NEW**

## OC200

*Medium Washed Bucket*

PROFILE	Bucket
SIZE	One Size Fits Most
SHAPE	Unstructured
FABRIC	Cotton Twill
VISOR	Brim
SWEATBAND	Cotton Sheeting

OSFM



BLACK    GREY    KHAKI    OLIVE    WHITE

SUNBLOCKER

**EMB: \$17.70**  
ASK ABOUT  
LEATHER PATCHES

## OC200PF

Performance Bucket

PROFILE	Bucket
SIZE	One Size Fits Most
SHAPE	Unstructured
FABRIC	Moisture Wicking Polyester
VISOR	Brim
SWEATBAND	Moisture Wicking Polyester
ADD'L DETAILS	UPF Rated 50+

OSFM



Sublimated Patch

**NEW**



SUNBLOCKER

**EMB: \$15.90**

ASK ABOUT  
LEATHER PATCHES

**BH-500**

*Twill Bucket*

PROFILE	Boonie
SIZE	L/XL
SHAPE	Unstructured
FABRIC	Cotton Twill
VISOR	Brim
SWEATBAND	Expand-A-Band®
ADD'L DETAILS	Metal Screen Vents, Chin Cord



Flat Embroidery



L/XL



KHAKI

NAVY

**EMB: \$23.80**

ASK ABOUT  
LEATHER PATCHES

**BH-600**

*Supplex Boonie W/Strap*

PROFILE	Boonie
SIZE	One Size Fits Most
SHAPE	Unstructured
FABRIC	Nylon
VISOR	Brim
SWEATBAND	Expand-A-Band®
ADD'L DETAILS	UPF Rated 50+, Antique Brass Eyelets, Adjustable Chin Strap



Flat Embroidery



OSFM



KHAKI/  
OLIVE

**EMB: \$23.20**

ASK ABOUT  
LEATHER PATCHES

**CSB-100**

*Moisture Wicking Boonie*

PROFILE	Boonie
SIZE	One Size Fits Most
SHAPE	Unstructured
FABRIC	Moisture Wicking Polyester
VISOR	Floatable Brim
SWEATBAND	Moisture Wicking Polyester
ADD'L DETAILS	Side Crown Vents, Floatable Brim, Elastic Bungee Cord for Sizing, Adjustable Drawstring, Mesh Crown Lining, UPF Rated 50+, Front Decoration Only



Embroidered Patch



OSFM



BLACK

GRAPHITE

KHAKI

NAVY

ROYAL

WHITE

**EMB: \$28.00 w/Band**

ASK ABOUT  
LEATHER PATCHES

**STW-100**

*Sea Grass Straw Gambler*

PROFILE	Straw Hat
SIZE	One Size Fits Most
FABRIC	Natural Straw
VISOR	Brim
SWEATBAND	Expand-A-Band®
ADD'L DETAILS	Hat and Band Sold Separately (See STW-100B), Sun Protection Lining on Top of Crown and on Undervisor, UPF Rated 50+, To Customize This Style, Refer to the STW-100B



OSFM



NATURAL

**EMB: \$17.70**

ASK ABOUT  
LEATHER PATCHES

**STW-100B**

*Twill Band for Straw Gambler*

PROFILE	Straw Hat
SIZE	One Size Fits Most
FABRIC	Sea Grass Straw
ADD'L DETAILS	2" Removeable Cotton Twill Band, Hat and Band Sold Separately (See STW-100), Front Decoration Embroidery Only



Flat Embroidery

OSFM



BLACK

DARK GREEN

KHAKI

NAVY

ROYAL

**EMB: \$31.00**

ASK ABOUT  
LEATHER PATCHES

**STW-200L**

*Raffia Staw*

PROFILE	Cowboy Straw
SIZE	One Size Fits Most
FABRIC	Paper Raffia Straw
VISOR	Brim
SWEATBAND	Expand-A-Band®
ADD'L DETAILS	Embroidered by using a Single Band Hoop on a Regular Machine, Cowboy Hat, Braided Leather Band



Flat Embroidery



OSFM



NATURAL

# VISORS



BWV-100 FEATURED

**EMB: \$10.60**  
 ASK ABOUT  
 LEATHER PATCHES



Faux Leather Patch

## PCTV-100

*Premium Twill Visor*

<b>PROFILE</b>	Visor
<b>SIZE</b>	One Size Fits Most and Youth
<b>FABRIC</b>	Cotton Twill
<b>VISOR</b>	Pre-Curved
<b>SWEATBAND</b>	Cotton Sheeting
<b>ADD'L DETAILS</b>	2 1/4" Crown Height

### OSFM



BLACK CHARCOAL COLUMBIA BLUE KHAKI LIGHT GREY NAVY PURPLE RED ROYAL WHITE

### YOUTH



BLACK COLUMBIA BLUE LIGHT GREY NAVY PURPLE RED ROYAL WHITE

**EMB: \$22.00**

ASK ABOUT  
LEATHER PATCHES

**PNV-100**

*Ultimate Lightweight Performance Visor*

PROFILE	Visor
SIZE	One Size Fits Most
FABRIC	Moisture Wicking Polyester
VISOR	Regular Pre-Curved
SWEATBAND	Moisture Wicking Polyester
ADD'L DETAILS	2" Crown Height



Faux Leather Patch

**NEW**

OSFM



BLACK    DARK GREEN    GRAPHITE    GREY    NAVY    RED    ROYAL    WHITE

**EMB: \$14.50**

ASK ABOUT  
LEATHER PATCHES

**BWV-100**

*Tall Panel Visor*

PROFILE	Visor
SIZE	One Size Fits Most
FABRIC	Polyester/Spandex
VISOR	Slight Pre-Curved
SWEATBAND	Moisture Wicking Polyester
ADD'L DETAILS	2 3/4" Crown Height



Sublimated Patch

**NEW**

OSFM



BLACK    DARK GREEN    GRAPHITE    LIGHT GREY    NAVY    RED    ROYAL    WHITE

**EMB: \$11.70**

ASK ABOUT  
LEATHER PATCHES

**GWTV-100**

*Garment Washed Visor*

PROFILE	Visor
SIZE	One Size Fits Most
FABRIC	Cotton Twill
VISOR	Pre-Curved
SWEATBAND	Cotton Twill
ADD'L DETAILS	2 1/4" Crown Height



Flat Embroidery

OSFM



BLACK    KHAKI    RED    TRUE NAVY    WHITE

# COLD WEATHER



KNF-PLD FEATURED

**EMB: \$16.70**

ASK ABOUT  
LEATHER PATCHES

**OC807**

*Cable Knit Beanie*

PROFILE	Beanie
SIZE	One Size Fits Most
FABRIC	Acrylic Knit
DECORATION	Debossed Faux Leather Wrapped Label
ADD'L DETAILS	9" W x 8.5" H



Faux Leather Patch

OSFM



BLACK



HEATHERED  
BROWN



HEATHERED  
GREY



NAVY

**EMB: \$19.30**

ASK ABOUT  
LEATHER PATCHES

**OC805**

*Ladies Cable Knit Faux Fur Pom*

PROFILE	Beanie
SIZE	One Size Fits Most
FABRIC	Acrylic Knit
DECORATION	Debossed Faux Leather Wrap Label
ADD'L DETAILS	9" w x 8.5" h (Not Including Pom), Faux Fur Pom



Faux Leather Patch

OSFM



BLACK



CHARCOAL



IVORY



ROSE GOLD

COLD WEATHER

**EMB: \$17.00**

ASK ABOUT  
LEATHER PATCHES

**KNF-PLD**

Plaid Watch Cap with Pom

PROFILE Watch Cap  
SIZE One Size Fits Most  
FABRIC Acrylic Knit  
ADD'L DETAILS 9.5" w x 8.5" h (Not Including Pom), Pom, 3" Cuff, Jacquard Buffalo Plaid



Sublimated Patch

**NEW**

OSFM



BLACK/  
CHARCOAL



NAVY/  
OLIVE



RED/  
BLACK

**EMB: \$18.30**

ASK ABOUT  
LEATHER PATCHES

**OC806**

Oversized Pom Watch Cap

PROFILE Watch Cap  
SIZE One Size Fits Most  
FABRIC Acrylic Knit  
ADD'L DETAILS 8.25" w x 8" h, Oversized Pom, 3" Cuff



Faux Bamboo Patch

OSFM



BLACK



CHARCOAL



IVORY



MIDNIGHT BLUE



OLIVE

**EMB: \$15.40**

ASK ABOUT  
LEATHER PATCHES

**OC808**

Waffle Knit Watch Cap

PROFILE Watch Cap  
SIZE One Size Fits Most  
FABRIC Acrylic Waffle Knit  
DECORATION Faux Suede Wrap Label  
ADD'L DETAILS 8.5" w x 8" h, 3" Cuff, Waffle Knit



Sublimated Patch

OSFM



BLACK



CHARCOAL



NAVY



OLIVE



**EMB: \$17.90**

ASK ABOUT  
LEATHER PATCHES

**OC804**

Chunky Watch Cap

PROFILE Watch Cap  
 SIZE One Size Fits Most  
 FABRIC Acrylic Knit  
 DECORATION Woven Wrap Label  
 ADD'L DETAILS 8.5" w x 8" h, 3" Cuff, Watch Cap with Cuff, Knitted Pattern is Unique;  
 Colors May Vary



Genuine Leather Patch

OSFM



**EMB: \$10.30**

ASK ABOUT  
LEATHER PATCHES

**KN-400**

Super Stretch Knit Watch Cap

PROFILE Watch Cap  
 SIZE One Size Fits Most  
 FABRIC Acrylic Knit  
 ADD'L DETAILS 7" w x 8" h, 2 1/2" Cuff,



Flat Embroidery

OSFM



**EMB: \$15.00**

ASK ABOUT  
LEATHER PATCHES

**KNF-100**

Watch Cap with Pom

PROFILE Watch Cap  
 SIZE One Size Fits Most  
 FABRIC Acrylic Knit  
 ADD'L DETAILS 9" w x 9" h (Not Including Pom), 2 1/2" Cuff, Pom, Contrasting Jacquard Stripes, Black Polyester Fleece Lined Crown



Flat Embroidery

OSFM



COLD WEATHER

**EMB: \$10.40**

ASK ABOUT  
LEATHER PATCHES

**KN-550**

*Super Stretch Knit Beanie*

PROFILE Beanie  
SIZE One Size Fits Most  
FABRIC Acrylic Knit  
ADD'L DETAILS 7.75" w x 8.25" h



Faux Leather Embroidered Patch

OSFM



BLACK



CHARCOAL



DARK GREEN



LIGHT GREY



NAVY



NEON YELLOW

**EMB: \$17.20**

ASK ABOUT  
LEATHER PATCHES

**KNF-USA**

*Americana Watch Cap W/Pom*

PROFILE Watch Cap  
SIZE One Size Fits Most  
FABRIC Acrylic Knit  
ADD'L DETAILS 9.5" w x 8.5" h (Not Including Pom), 2 1/2" Cuff, Pom, Black Polyester Fleece Lined Crown, Jacquard Stars & Stripes



Flat Embroidery

OSFM



RED/WHITE/BLUE

**EMB: \$11.50**

ASK ABOUT  
LEATHER PATCHES

**FB-500**

*Polyester Fleece Beanie*

PROFILE Beanie  
SIZE One Size Fits Most  
FABRIC Polyester Fleece  
ADD'L DETAILS 9.25" w x 8.0" h



Flat Embroidery

OSFM



BLACK



CHARCOAL



NAVY

**EMB: \$15.60**

ASK ABOUT  
LEATHER PATCHES

**CMK-405**

*Camo Knit Reversible Beanie*

PROFILE Beanie  
SIZE One Size Fits Most  
FABRIC Polyester Knit  
ADD'L DETAILS 9.5" w x 8.5" h, Reversible Camo



Embroidered Patch

OSFM



MOSSY OAK® COUNTRY DNA® BLAZE  
MOSSY OAK® COUNTRY DNA® BROWN  
MOSSY OAK® NEW BREAK-UP® BLACK  
REALTREE EDGE® BLACK

**EMB: \$17.00**

ASK ABOUT  
LEATHER PATCHES

**COR-002**

*Fleece Reversible Watch Cap*

PROFILE Watch Cap  
SIZE One Size Fits Most  
FABRIC Polyester Fleece  
ADD'L DETAILS 11.5" w x 10" h, 3.5" Cuff, Camo Reversible to Blaze Fleece, Anti-Piling Fleece Watch Cap



Flat Embroidery

OSFM



BLACK/BLACK  
MOSSY OAK® COUNTRY DNA® BLAZE  
REALTREE EDGE® BLAZE

**EMB: \$13.30**

ASK ABOUT  
LEATHER PATCHES

**LFW-200**

*Fleece Watch Cap*

PROFILE Watch Cap  
SIZE One Size Fits Most  
FABRIC Polyester Fleece  
ADD'L DETAILS 11" w x 10.75" h, 3.75" Cuff, Single Layer Fleece



Flat Embroidery

OSFM



BLAZE  
MOSSY OAK® COUNTRY DNA® ORIGINAL  
MOSSY OAK® BOTTOMLAND®  
REALTREE TIMBER®

COLD WEATHER

**EMB: \$18.10**

ASK ABOUT  
LEATHER PATCHES

**WRA-202**

*Wrangler® Weathered Cotton Cap*

- PROFILE Pro Round Crown
- SIZE One Size Fits Most
- SHAPE Structured
- FABRIC Weathered Cotton
- VISOR Slight Pre-Curved
- SWEATBAND Cotton Sheeting
- ADD'L DETAILS Wrangler® Workwear Label on Back Left Side



Back Left Side

Faux Leather Patch

**NEW**

OSFM



BROWN/BLACK

**EMB: \$17.00**

ASK ABOUT  
LEATHER PATCHES

**WRA-201M**

*Wrangler® Canvas Trucker*

- PROFILE Pro Round Crown
- SIZE One Size Fits Most
- SHAPE Structured
- FABRIC Cotton Canvas
- VISOR Slight Pre-Curved
- SWEATBAND Cotton Twill
- ADD'L DETAILS Wrangler® Workwear Label at Back Center



Embroidered Patch

**NEW**

OSFM



BROWN/BLACK/  
BLACK

**EMB: \$18.50**

ASK ABOUT  
LEATHER PATCHES

**WRA-200**

*Wrangler® Unstructured DUK Canvas*

- PROFILE Mid Crown
- SIZE One Size Fits Most
- SHAPE Unstructured
- FABRIC Cotton Canvas
- VISOR Pre-Curved
- SWEATBAND Cotton Sheeting
- ADD'L DETAILS Wrangler® Workwear Label on Back Right Side



Faux Leather Patch

**NEW**

OSFM



BROWN

**EMB: \$15.00**  
ASK ABOUT  
LEATHER PATCHES

## CARG100

Cargo Canvas Pocket Cap

PROFILE	Low Crown
SIZE	One Size Fits Most
SHAPE	Unstructured
FABRIC	Cotton Canvas
VISOR	Pre-Curved
SWEATBAND	Cotton Sheeting
ADD'L DETAILS	Cargo Pocket Overlay on Left and Right Sides, Side Embroidery Not Recommended

OSFM



BLACK

BROWN

NAVY



Faux Leather Patch

**NEW**



**EMB: \$14.50**

ASK ABOUT  
LEATHER PATCHES

### HPC-615M

*Premium Rugged Camo Trucker*

PROFILE	Pro Round Crown
SIZE	One Size Fits Most
SHAPE	Structured
FABRIC	Weathered Cotton
VISOR	Slight Pre-Curved
SWEATBAND	Cotton Twill



Custom Shape Faux Leather Patch

**NEW**

OSFM



BROWN/ KRYPTEK® HIGHLANDER® BROWN	BROWN/ MOSSY OAK® COUNTRY DNA® BROWN	BROWN/ REALTREE EDGE® BROWN
--	---	--------------------------------------

**EMB: \$13.40**

ASK ABOUT  
LEATHER PATCHES

### HPD-615M

*Premium Rugged Trucker*

PROFILE	Pro Round Crown
SIZE	One Size Fits Most
SHAPE	Structured
FABRIC	Weathered Cotton
VISOR	Slight Pre-Curved
SWEATBAND	Cotton Twill



Flat Embroidery

**BEST  
SELLER**

OSFM



BROWN/ KHAKI/DUK	NAVY/ KHAKI/DUK	OLIVE/ KHAKI/DUK
---------------------	--------------------	---------------------

**EMB: \$14.00**

ASK ABOUT  
LEATHER PATCHES

### HPD-610M

*Weathered Cotton Mesh Back Cap*

PROFILE	Low Crown
SIZE	One Size Fits Most
SHAPE	Unstructured
FABRIC	Weathered Cotton
VISOR	Pre-Curved
SWEATBAND	Cotton Twill
ADD'L DETAILS	Heavy Construction Stitch



Flat Embroidery

OSFM



BLACK	BROWN	KHAKI	NAVY	CHARCOAL/ LIGHT GREY	OLIVE/ KHAKI
-------	-------	-------	------	-------------------------	-----------------

**EMB: \$15.90**  
ASK ABOUT  
LEATHER PATCHES

**HPD-605**

*Weathered Cotton Solid Back Cap*

PROFILE	Low Crown
SIZE	One Size Fits Most
SHAPE	Unstructured
FABRIC	Weathered Cotton
VISOR	Pre-Curved
SWEATBAND	Cotton Twill



Genuine Leather Patch

OSFM



**EMB: \$15.00**  
ASK ABOUT  
LEATHER PATCHES

**WCV-100M**

*Weathered Canvas Mesh Back*

PROFILE	Low Crown
SIZE	One Size Fits Most
SHAPE	Unstructured
FABRIC	Cotton Canvas
VISOR	Pre-Curved
SWEATBAND	Cotton Sheeting
ADD'L DETAILS	Due to the Washing on This Style, Each One Will Look Unique



Flat Embroidery

OSFM



**EMB: \$13.20**  
ASK ABOUT  
LEATHER PATCHES

**DUK-800**

*Washed Canvas Solid Back*

PROFILE	Pro Round Crown
SIZE	One Size Fits Most
SHAPE	Structured
FABRIC	Cotton Canvas
VISOR	Slight Pre-Curved
SWEATBAND	Moisture Wicking Polyester



Flat Embroidery

OSFM



BROWN

**EMB: \$12.60**

ASK ABOUT  
LEATHER PATCHES

**DUK-800M**

Washed Canvas Mesh Back

PROFILE	Pro Round Crown
SIZE	One Size Fits Most
SHAPE	Structured
FABRIC	Cotton Canvas
VISOR	Slight Pre-Curved
SWEATBAND	Moisture Wicking Polyester



Flat Embroidery

OSFM



**EMB: \$12.00**

ASK ABOUT  
LEATHER PATCHES

**DUK-111SB**

DUK Canvas Snapback

PROFILE	Mid Crown
SIZE	One Size Fits Most
SHAPE	Unstructured
FABRIC	Cotton Canvas
VISOR	Pre-Curved
SWEATBAND	Cotton Sheeting



Sublimated Patch

**NEW**

OSFM



**EMB: \$15.60**

ASK ABOUT  
LEATHER PATCHES

**HPK-100**

Washed Canvas W/Weathered Visor

PROFILE	Low Crown
SIZE	One Size Fits Most
SHAPE	Unstructured
FABRIC	Cotton Canvas
VISOR	Pre-Curved
SWEATBAND	Moisture Wicking Polyester



Embroidered Patch

OSFM





**EMB: \$13.40**

ASK ABOUT  
LEATHER PATCHES

**DN-200M**

*Heavy Washed Denim Mesh Back*

PROFILE	Mid Crown
SIZE	One Size Fits Most
SHAPE	Structured
FABRIC	Cotton Twill
VISOR	Pre-Curved
SWEATBAND	Cotton Sheeting



Flat Embroidery

OSFM



BLACK DENIM/  
PUTTY      BLUE DENIM/  
KHAKI

**EMB: \$15.00**

ASK ABOUT  
LEATHER PATCHES

**OC802**

*Etched Camo Weathered Meshback*

PROFILE	Low Crown
SIZE	One Size Fits Most
SHAPE	Structured
FABRIC	Canvas Camo
VISOR	Pre-Curved
SWEATBAND	Cotton Twill



Genuine Leather Patch

OSFM



BLUE/  
NAVY      GREY/  
BLACK      LIGHT BROWN/  
BROWN      OLIVE/  
OLIVE

**EMB: \$16.60**

ASK ABOUT  
LEATHER PATCHES

**HPC-400M**

*Weathered Cotton Mesh Back*

PROFILE	Low Crown
SIZE	One Size Fits Most
SHAPE	Structured
FABRIC	Weathered Cotton
VISOR	Frayed Pre-Curved
SWEATBAND	Cotton Sheeting
ADD'L DETAILS	Contrast Heavy Decorative Stitch



Flat Embroidery

OSFM



BROWN/  
LIGHT GREY/  
MOSSY OAK®  
COUNTRY DNA®      OLIVE/  
LIGHT GREY/  
MOSSY OAK®  
COUNTRY DNA®

**EMB: \$15.90**

ASK ABOUT  
LEATHER PATCHES

### HPC-305

*Weathered Cotton W/Camo Back*

PROFILE	Low Crown
SIZE	One Size Fits Most
SHAPE	Unstructured
FABRIC	Weathered Cotton
VISOR	Pre-Curved
SWEATBAND	Cotton Twill



Flat Embroidery

OSFM



**EMB: \$14.60**

ASK ABOUT  
LEATHER PATCHES

### HPC-500M

*Weathered Cotton Mesh Back*

PROFILE	Low Crown
SIZE	One Size Fits Most
SHAPE	Unstructured
FABRIC	Weathered Cotton
VISOR	Frayed Pre-Curved
SWEATBAND	Cotton Sheeting



Flat Embroidery

OSFM



**EMB: \$15.20**

ASK ABOUT  
LEATHER PATCHES

### WAX606IS

*Waxed Canvas Cap*

PROFILE	Mid Crown
SIZE	One Size Fits Most
SHAPE	Unstructured
FABRIC	Waxed Canvas
VISOR	Pre-Curved
SWEATBAND	Cotton Sheeting
ADD'L DETAILS	Sewn Application Recommended for Decoration



Flat Embroidery

OSFM



# CAMO



OC771CAMO FEATURED

**EMB: \$15.00**  
ASK ABOUT  
LEATHER PATCHES

## OC771CAMO

*Camo Premium Modern Trucker*

<b>PROFILE</b>	Pro Round Crown
<b>SIZE</b>	One Size Fits Most and XL
<b>SHAPE</b>	Structured
<b>FABRIC</b>	Canvas Camo
<b>VISOR</b>	Slight Pre-Curved
<b>SWEATBAND</b>	Cotton Twill
<b>ADD'L DETAILS</b>	Comfort Cotton Sweatband, Contrast Construction Stitch on Crown and Visor



Embroidered Patch

**BEST  
SELLER**

**NEW  
COLORS**

### OSFM



### XL



**EMB: \$15.80**

ASK ABOUT  
LEATHER PATCHES

**OC871CAMO**

*Camo Premium Modern Solid Back*

<b>PROFILE</b>	Pro Round Crown
<b>SIZE</b>	One Size Fits Most
<b>SHAPE</b>	Structured
<b>FABRIC</b>	Canvas Camo
<b>VISOR</b>	Slight Pre-Curved
<b>SWEATBAND</b>	Comfort Sweatband

Genuine Leather Patch

**BEST  
SELLER**



OSFM



CAMO

# EMB: \$12.80

## ASK ABOUT LEATHER PATCHES



### 301S

Camo Snap Back

Sublimated Patch

<b>PROFILE</b>	Pro Round Crown
<b>SIZE</b>	One Size Fits Most and Youth
<b>SHAPE</b>	Structured
<b>FABRIC</b>	Canvas Camo
<b>VISOR</b>	Slight Pre-Curved
<b>SWEATBAND</b>	Cotton Sheeting
<b>ADD'L DETAILS</b>	Blaze and Mossy Oak® Blaze™ are Polyester

**NEW COLORS**

OSFM



YOUTH



# EMB: \$13.20

## ASK ABOUT LEATHER PATCHES



### 350

Camo Solid Back Cap

Embroidered Patch

<b>PROFILE</b>	Mid Crown
<b>SIZE</b>	One Size Fits Most
<b>SHAPE</b>	Structured
<b>FABRIC</b>	Canvas Camo
<b>VISOR</b>	Pre-Curved
<b>SWEATBAND</b>	Cotton Sheeting
<b>ADD'L DETAILS</b>	Blaze and Mossy Oak® Blaze™ are Polyester

**NEW COLORS**

OSFM



# EMB: \$16.70

ASK ABOUT  
LEATHER PATCHES



## PFC-100

Moisture Wicking Camo Solid Back

<b>PROFILE</b>	Low Crown
<b>SIZE</b>	One Size Fits Most
<b>SHAPE</b>	Structured
<b>FABRIC</b>	Moisture Wicking Polyester Camo
<b>VISOR</b>	Pre-Curved
<b>SWEATBAND</b>	Moisture Wicking And Cooling Polyester
<b>ADD'L DETAILS</b>	Anti-Microbial & Scent Control on Mossy Oak & Realtree Patterns Only

Flat Embroidery

NEW  
COLORS



OSFM



# EMB: \$16.50

ASK ABOUT  
LEATHER PATCHES



## PFC-150M

Moisture Wicking Camo Mesh Back

<b>PROFILE</b>	Low Crown
<b>SIZE</b>	One Size Fits Most
<b>SHAPE</b>	Structured
<b>FABRIC</b>	Polyester Camo
<b>VISOR</b>	Pre-Curved
<b>SWEATBAND</b>	Moisture Wicking And Cooling Polyester
<b>ADD'L DETAILS</b>	Anti-Microbial & Scent Control on Mossy Oak & Realtree Patterns Only

Sublimated Patch

NEW  
COLORS



OSFM



CAMO

**EMB: \$13.50**  
 ASK ABOUT  
 LEATHER PATCHES



Genuine Leather Patch

**315M**

*Camo Mesh Back*

<b>PROFILE</b>	Mid Crown
<b>SIZE</b>	One Size Fits Most
<b>SHAPE</b>	Structured
<b>FABRIC</b>	Canvas Camo
<b>VISOR</b>	Pre-Curved
<b>SWEATBAND</b>	Cotton Sheeting
<b>ADD'L DETAILS</b>	Blaze is Polyester

OSFM



BLAZE

KRYPTEK®  
HIGHLANDER®

MOSSY OAK®  
COUNTRY DNA®

MOSSY OAK®  
NEW BREAK-UP®

REALTREE  
EDGE®

**EMB: \$13.20**  
 ASK ABOUT  
 LEATHER PATCHES



Genuine Leather Patch

**CGWM-301**

*Washed Camo W/Contrasting Mesh Back*

<b>PROFILE</b>	Low Crown
<b>SIZE</b>	One Size Fits Most
<b>SHAPE</b>	Unstructured
<b>FABRIC</b>	Canvas Camo
<b>VISOR</b>	Pre-Curved
<b>SWEATBAND</b>	Cotton Twill

OSFM



MOSSY OAK®  
COUNTRY DNA®  
BROWN

MOSSY OAK®  
COUNTRY DNA®/  
NEON ORANGE

MOSSY OAK®  
ORIGINAL  
BLACK

MOSSY OAK®  
ORIGINAL  
BROWN

MOSSY OAK®  
ORIGINAL  
KHAKI

MOSSY OAK®  
NEW BREAK-UP®/  
TAN

REALTREE  
EDGE®/  
KHAKI

**EMB: \$15.90**  
ASK ABOUT  
LEATHER PATCHES



**360RT**

*Logoed Realtree Solid Back*

PROFILE	Mid Crown
SIZE	One Size Fits Most
SHAPE	Structured
FABRIC	Canvas Camo
VISOR	Pre-Curved
SWEATBAND	Cotton Sheeting
ADD'L DETAILS	Flat Stitch Realtree Logo on Visor

Sublimated Patch

OSFM



**EMB: \$15.90**  
ASK ABOUT  
LEATHER PATCHES



**360MO**

*Logoed Mossy Oak Visor*

PROFILE	Mid Crown
SIZE	One Size Fits Most
SHAPE	Structured
FABRIC	Canvas Camo
VISOR	Pre-Curved
SWEATBAND	Cotton Sheeting
ADD'L DETAILS	Flat Stitch Mossy Oak Logo on Visor

Embroidered Patch

OSFM



**EMB: \$14.80**  
ASK ABOUT  
LEATHER PATCHES



**CBI-305**

*Canvas Camo W/Blaze*

PROFILE	Mid Crown
SIZE	One Size Fits Most
SHAPE	Structured
FABRIC	Canvas Camo
VISOR	Pre-Curved
SWEATBAND	Cotton Twill
ADD'L DETAILS	Blaze Accents

Flat Embroidery

OSFM





**EMB: \$15.00**  
 ASK ABOUT  
 LEATHER PATCHES

**OC802**

*Etched Camo Weathered Meshback*

PROFILE	Low Crown
SIZE	One Size Fits Most
SHAPE	Structured
FABRIC	Canvas Camo
VISOR	Pre-Curved
SWEATBAND	Cotton Twill



Genuine Leather Patch

OSFM



**EMB: \$13.40**  
 ASK ABOUT  
 LEATHER PATCHES

**GC-100M**

*Generic Camo Mesh Back*

PROFILE	Mid Crown
SIZE	One Size Fits Most
SHAPE	Structured
FABRIC	Canvas Camo
VISOR	Pre-Curved
SWEATBAND	Cotton Twill



Genuine Leather Patch

**NEW**

OSFM



**EMB: \$13.20**  
 ASK ABOUT  
 LEATHER PATCHES

**GC-100**

*Generic Camo Snap Back*

PROFILE	Mid Crown
SIZE	One Size Fits Most
SHAPE	Structured
FABRIC	Canvas Camo
VISOR	Pre-Curved
SWEATBAND	Cotton Twill



Sublimated Patch

**NEW**

OSFM



**EMB: \$14.50**

ASK ABOUT  
LEATHER PATCHES

### HPC-615M

*Premium Rugged Camo Trucker*

PROFILE	Pro Round Crown
SIZE	One Size Fits Most
SHAPE	Structured
FABRIC	Weathered Cotton
VISOR	Slight Pre-Curved
SWEATBAND	Cotton Twill



Custom Shape Faux Leather Patch

**NEW**

OSFM



**EMB: \$15.90**

ASK ABOUT  
LEATHER PATCHES

### HPC-305

*Weathered Cotton W/Camo Back*

PROFILE	Low Crown
SIZE	One Size Fits Most
SHAPE	Unstructured
FABRIC	Weathered Cotton
VISOR	Pre-Curved
SWEATBAND	Cotton Twill



Embroidered Patch

OSFM



**EMB: \$14.60**

ASK ABOUT  
LEATHER PATCHES

### HPC-500M

*Weathered Cotton Mesh Back*

PROFILE	Low Crown
SIZE	One Size Fits Most
SHAPE	Unstructured
FABRIC	Weathered Cotton
VISOR	Frayed Pre-Curved
SWEATBAND	Cotton Sheeting



Flat Embroidery

OSFM



**EMB: \$14.80**  
ASK ABOUT  
LEATHER PATCHES

**BRB-605**

*Barbed Wire W/Camo*

PROFILE	Mid Crown
SIZE	One Size Fits Most
SHAPE	Structured
FABRIC	Cotton Twill
VISOR	Pre-Curved
SWEATBAND	Cotton Twill
ADD'L DETAILS	Embroidered Barbed Wire Design



Flat Embroidery

OSFM



**EMB: \$17.90**  
ASK ABOUT  
LEATHER PATCHES

**CWF-405**

*Multicam® Cap W/Flag Visor*

PROFILE	Mid Crown
SIZE	One Size Fits Most
SHAPE	Structured
FABRIC	NyCo Ripstop
VISOR	Pre-Curved
SWEATBAND	Cotton Twill
ADD'L DETAILS	Woven Flag Label on Visor and Back Arch



Genuine Leather Patch

OSFM



**EMB: \$15.20**  
ASK ABOUT  
LEATHER PATCHES

**CWF-305**

*Structured W/Camo Flag Visor Insert*

PROFILE	Low Crown
SIZE	One Size Fits Most
SHAPE	Structured
FABRIC	Canvas Camo
VISOR	Pre-Curved
SWEATBAND	Cotton Twill
ADD'L DETAILS	Woven Flag Label on Visor and Back Arch



Embroidered Patch

OSFM



**EMB: \$18.20**

ASK ABOUT  
LEATHER PATCHES

## TAC-700

Tactical Multicam® Cap W/Flag

PROFILE	Low Crown
SIZE	One Size Fits Most
SHAPE	Unstructured
FABRIC	Canvas Camo
VISOR	Pre-Curved
SWEATBAND	Moisture Wicking Polyester
DECORATION	Flat Stitch on Scout Patch
ADD'L DETAILS	Easy Fit with Earpiece or Glasses, No Top Button to Interfere with a Headset, American Flag on Left Side



3D and Flat Embroidery

OSFM



MULTICAM®

MULTICAM®  
BLACK

**EMB: \$15.70**

ASK ABOUT  
LEATHER PATCHES

## TAC-600

Tactical Unstructured Camo W/Flag

PROFILE	Low Crown
SIZE	One Size Fits Most
SHAPE	Unstructured
FABRIC	Canvas Camo
VISOR	Pre-Curved
SWEATBAND	Moisture Wicking Polyester
DECORATION	Flat Stitch On Scout Patch
ADD'L DETAILS	Easy Fit with Earpiece or Glasses, No Top Button to Interfere with a Headset, American Flag on Left Side



Sublimated Patch



OSFM



KRYPTEK®  
HIGHLANDER®

KRYPTEK®  
RAID™

KRYPTEK®  
TYPHON™

**EMB: \$18.30**

ASK ABOUT  
LEATHER PATCHES

## SUS-100

Sublimated Flag Front W/Camo Back

PROFILE	Low Crown
SIZE	One Size Fits Most
SHAPE	Structured
FABRIC	Canvas Camo
VISOR	Pre-Curved
SWEATBAND	Cotton Sheeting
DECORATION	Sublimation on Front Panels
ADD'L DETAILS	Contrast Heavy Decorative Stitch on Visor



3D and Flat Embroidery

OSFM



AMERICAN FLAG/  
MOSSY OAK®  
COUNTRY DNA®

**EMB: \$16.10**  
 ASK ABOUT  
 LEATHER PATCHES

**USA-350**

*Camo W/Woven Flag*

PROFILE	Mid Crown
SIZE	One Size Fits Most
SHAPE	Structured
FABRIC	Canvas Camo
VISOR	Woven Sandwich Visor
SWEATBAND	Cotton Sheeting
ADD'L DETAILS	Contrast Construction Stitch on Crown and Visor



Flat Embroidery

OSFM



MOSSY OAK® NEW BREAK-UP® REALTREE EDGE®

**EMB: \$16.80**  
 ASK ABOUT  
 LEATHER PATCHES

**CWF-310**

*Mesh Back W/Camo Flag Undervisor*

PROFILE	Low Crown
SIZE	One Size Fits Most
SHAPE	Unstructured
FABRIC	Canvas Camo
VISOR	Pre-Curved
SWEATBAND	Cotton Twill
ADD'L DETAILS	Flag Water Print on Undervisor, Contrast Stitch on Visor



Flat Embroidery

OSFM



REALTREE EDGE®/ AMERICAN FLAG

**EMB: \$17.00**  
 ASK ABOUT  
 LEATHER PATCHES

**CWF-315**

*Solid Back W/Camo Flag Undervisor*

PROFILE	Low Crown
SIZE	One Size Fits Most
SHAPE	Unstructured
FABRIC	Canvas Camo
VISOR	Pre-Curved
SWEATBAND	Cotton Twill
ADD'L DETAILS	Flag Water Print on Undervisor, Contrast Construction Stitch



Sublimated Patch

OSFM



REALTREE EDGE®/ AMERICAN FLAG

**EMB: \$15.80**

ASK ABOUT  
LEATHER PATCHES

**CWF-400M**

American Flag Camo Mesh Back

PROFILE	Low Crown
SIZE	One Size Fits Most
SHAPE	Structured
FABRIC	Canvas Camo
VISOR	Pre-Curved
SWEATBAND	Cotton Sheeting
ADD'L DETAILS	Contrast Heavy Decorative Stitch on Visor, Sublimated Mesh Back Panels



Flat Embroidery

OSFM



MOSSY OAK®  
COUNTRY DNA®/AMERICAN FLAG  
MOSSY OAK®  
COUNTRY DNA®/TEXAS FLAG

**EMB: \$17.00**

ASK ABOUT  
LEATHER PATCHES

**COR-002**

Fleece Reversible Watch Cap

PROFILE	Watch Cap
SIZE	One Size Fits Most
FABRIC	Polyester Fleece
ADD'L DETAILS	11.5" w x 10" h, 3.5" h Cuff, Camo Reversible to Blaze Fleece, Anti-Piling Fleece Watch Cap



Flat Embroidery

OSFM



BLACK/  
BLACK  
MOSSY OAK®  
COUNTRY DNA®/  
BLAZE  
REALTREE  
EDGE®/  
BLAZE

**EMB: \$15.60**

ASK ABOUT  
LEATHER PATCHES

**CMK-405**

Camo Knit Reversible Beanie

PROFILE	Beanie
SIZE	One Size Fits Most
FABRIC	Polyester Knit
ADD'L DETAILS	9.5" w x 8.5" h, Reversible Camo



Embroidered Patch

OSFM



MOSSY OAK®  
COUNTRY DNA®/  
BLAZE  
MOSSY OAK®  
COUNTRY DNA®/  
BROWN  
MOSSY OAK®  
NEW BREAK-UP®/  
BLACK  
REALTREE  
EDGE®/  
BLACK

**EMB: \$13.30**

ASK ABOUT  
LEATHER PATCHES

### LFW-200

*Fleece Watch Cap*

PROFILE	Watch Cap
SIZE	One Size Fits Most
FABRIC	Polyester Fleece
ADD'L DETAILS	11" w x 10.75" h, 3.75" Cuff, Single Layer Fleece



Genuine Leather Patch

OSFM



BLAZE



MOSSY OAK®  
COUNTRY DNA®



MOSSY OAK®  
ORIGINAL  
BOTTOMLAND®



REALTREE  
TIMBER®

**EMB: \$10.10**

ASK ABOUT  
LEATHER PATCHES

### 401PC

*Camo Solid Back*

PROFILE	Low Crown
SIZE	One Size Fits Most
SHAPE	Structured
FABRIC	Canvas Camo
VISOR	Pre-Curved
SWEATBAND	Cotton Sheeting



Flat Embroidery

OSFM



ADVANTAGE  
CLASSIC®



MOSSY OAK®  
NEW BREAK-UP®

**EMB: \$10.60**

ASK ABOUT  
LEATHER PATCHES

### 430PC

*Washed Camo Mesh Back*

PROFILE	Low Crown
SIZE	One Size Fits Most
SHAPE	Unstructured
FABRIC	Canvas Camo
VISOR	Pre-Curved
SWEATBAND	Cotton Sheeting



Flat Embroidery

OSFM



ADVANTAGE  
CLASSIC®/  
KHAKI



MOSSY OAK®  
NEW BREAK-UP®/  
BLACK

**EMB: \$10.20**  
 ASK ABOUT  
 LEATHER PATCHES

**501PC**

5 Panel Camo

**PROFILE** Low Crown  
**SIZE** One Size Fits Most  
**SHAPE** Structured  
**FABRIC** Canvas Camo  
**VISOR** Pre-Curved  
**SWEATBAND** Cotton Sheeting

OSFM



Flat Embroidery

**EMB: \$11.50**  
 ASK ABOUT  
 LEATHER PATCHES

**DC-610**

Structured Fashion Camo

**PROFILE** Mid Crown  
**SIZE** One Size Fits Most  
**SHAPE** Structured  
**FABRIC** Cotton Twill  
**VISOR** Pre-Curved  
**SWEATBAND** Cotton Sheeting

OSFM



Flat Embroidery



# HI-VIS



OC871CAMO FEATURED

**EMB: \$15.80**

ASK ABOUT  
LEATHER PATCHES

## OC871CAMO

*Camo Premium Modern Solid Back*

PROFILE	Pro Round Crown
SIZE	One Size Fits Most
SHAPE	Structured
FABRIC	Canvas Camo
VISOR	Slight Pre-Curved
SWEATBAND	Comfort Sweatband

OSFM



BLAZE



Genuine Leather Patch

**BEST  
SELLER**

**EMB: \$16.80**

ASK ABOUT  
LEATHER PATCHES

### SAF-201

*Hi-Vis Polyester W/Reflective Accents*

PROFILE	Low Crown
SIZE	One Size Fits Most
SHAPE	Structured
FABRIC	Polyester Twill
VISOR	Pre-Curved
SWEATBAND	Cotton Sheeting
ADD'L DETAILS	Reflective Fabric Inserts, Black Anti-Glare Undervisor, Reflective Taping



Flat Embroidery

OSFM



**EMB: \$14.60**

ASK ABOUT  
LEATHER PATCHES

### SAF-300M

*Hi-Vis Polyester W/Reflective Accents Mesh Back*

PROFILE	Mid Crown
SIZE	One Size Fits Most
SHAPE	Structured
FABRIC	Polyester Twill
VISOR	Pre-Curved
SWEATBAND	Cotton Sheeting
ADD'L DETAILS	Reflective Fabric Inserts, Black Anti-Glare Undervisor, Reflective Taping



Flat Embroidery

OSFM



**EMB: \$12.80**

ASK ABOUT  
LEATHER PATCHES

### 301IS

*Camo Snap Back*

PROFILE	Pro Round Crown
SIZE	One Size Fits Most and Youth
SHAPE	Structured
FABRIC	Polyester
VISOR	Slight Pre-Curved
SWEATBAND	Cotton Sheeting
ADD'L DETAILS	Blaze is Polyester



Faux Leather Patch

OSFM and YOUTH



BLAZE

**EMB: \$13.20**  
 ASK ABOUT  
 LEATHER PATCHES

**350**

*Camo Solid Back Cap*

PROFILE	Mid Crown
SIZE	One Size Fits Most
SHAPE	Structured
FABRIC	Polyester
VISOR	Pre-Curved
SWEATBAND	Cotton Sheeting



Embroidered Patch

OSFM



BLAZE

**EMB: \$13.50**  
 ASK ABOUT  
 LEATHER PATCHES

**315M**

*Camo Mesh Back*

PROFILE	Mid Crown
SIZE	One Size Fits Most
SHAPE	Structured
FABRIC	Polyester
VISOR	Pre-Curved
SWEATBAND	Cotton Sheeting



Flat Embroidery

OSFM



BLAZE

**EMB: \$10.00**  
 ASK ABOUT  
 LEATHER PATCHES

**201ISP**

*Blaze Snap Back*

PROFILE	High Crown
SIZE	One Size Fits Most and Youth
SHAPE	Structured
FABRIC	Polyester Twill
VISOR	Pre-Curved
SWEATBAND	Cotton Sheeting
ADD'L DETAILS	Green Anti-Glare Undervisor



Flat Embroidery

OSFM and YOUTH



BLAZE

**EMB: \$14.30**

ASK ABOUT  
LEATHER PATCHES

**202IS**

*Blaze W/Camo Visor*

PROFILE	Mid Crown
SIZE	One Size Fits Most
SHAPE	Structured
FABRIC	Polyester Twill
VISOR	Pre-Curved
SWEATBAND	Cotton Sheeting



Flat Embroidery

OSFM



**EMB: \$14.10**

ASK ABOUT  
LEATHER PATCHES

**553IS**

*Unstructured Blaze W/Waxed Canvas Visor*

PROFILE	Low Crown
SIZE	One Size Fits Most
SHAPE	Unstructured
FABRIC	Polyester Twill
VISOR	Pre-Curved
SWEATBAND	Polyester Twill



Flat Embroidery

OSFM



**EMB: \$15.20**

ASK ABOUT  
LEATHER PATCHES

**550IS**

*Structured Blaze W/Waxed Canvas Visor*

PROFILE	High Crown
SIZE	One Size Fits Most
SHAPE	Structured
FABRIC	Polyester Twill
VISOR	Pre-Curved
SWEATBAND	Polyester Twill



Flat Embroidery

OSFM



**EMB: \$14.60**  
 ASK ABOUT  
 LEATHER PATCHES

**BLZ-615**

*Blaze W/Camo Inserts*

PROFILE	Mid Crown
SIZE	One Size Fits Most
SHAPE	Structured
FABRIC	Polyester Twill
VISOR	Pre-Curved
SWEATBAND	Cotton Sheeting



Flat Embroidery

OSFM



**EMB: \$15.90**  
 ASK ABOUT  
 LEATHER PATCHES

**BLZCPV**

*Blaze Hat & Vest Combo*

PROFILE	Mid Crown And Vest
SIZE	One Size Fits Most, Youth and Double X™
SHAPE	Structured
FABRIC	Polyester Twill
VISOR	Pre-Curved
SWEATBAND	Cotton Twill
ADD'L DETAILS	Structured Cap, Cap/Vest Combo, Available in Youth - BLZCPVY, Available in Double X™ - BLZCPVX



OSFM, YOUTH,  
 DOUBLE X™



**EMB: \$15.00**  
 ASK ABOUT  
 LEATHER PATCHES

**BLZKVST**

*Blaze Watch Cap & Vest Combo*

PROFILE	Watch Cap And Vest
SIZE	One Size Fits Most
FABRIC	Polyester Twill
ADD'L DETAILS	Acrylic Knit Watch Cap, Knit Watch Cap/Vest Combo



OSFM



**EMB: \$12.10**

ASK ABOUT  
LEATHER PATCHES

**KN-400BZ**

*Super Stretch Knit Watch Cap*

PROFILE Watch Cap  
SIZE One Size Fits Most  
FABRIC Polyester Knit  
ADD'L DETAILS 8.5" w x 10" h, 2.5" Cuff



Flat Embroidery

OSFM



BLAZE

**EMB: \$12.10**

ASK ABOUT  
LEATHER PATCHES

**KN-550BZ**

*Super Stretch Knit Beanie*

PROFILE Beanie  
SIZE One Size Fits Most  
FABRIC Polyester Knit  
ADD'L DETAILS 7.75" w x 8.25" h



Flat Embroidery

OSFM



BLAZE

**EMB: \$13.30**

ASK ABOUT  
LEATHER PATCHES

**LFW-200**

*Fleece Watch Cap*

PROFILE Watch Cap  
SIZE One Size Fits Most  
FABRIC Polyester Fleece  
ADD'L DETAILS 11" w x 10.75" h, 3.75" Cuff, Single Layer Fleece



Flat Embroidery

OSFM



BLAZE



# OUTDOOR CAP®



**ASI #75420**  
**SAGE #66971**  
**PPAI #213485**

Promotional Collection



SCAN TO VIEW  
DIGITAL CATALOG

